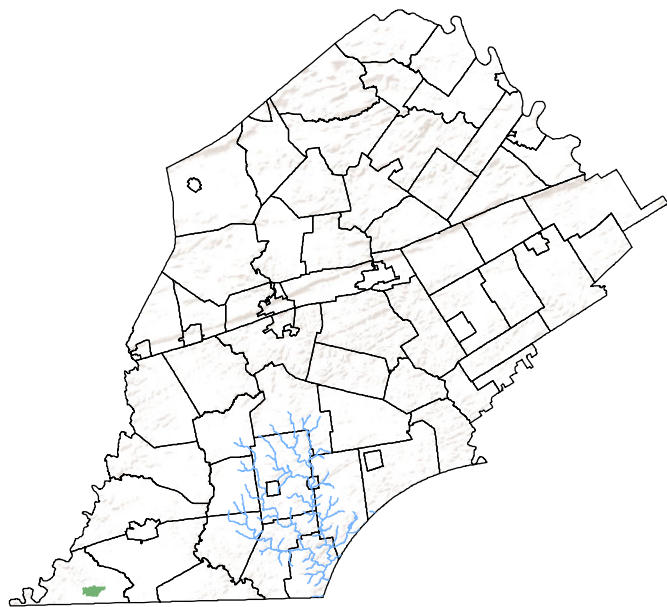
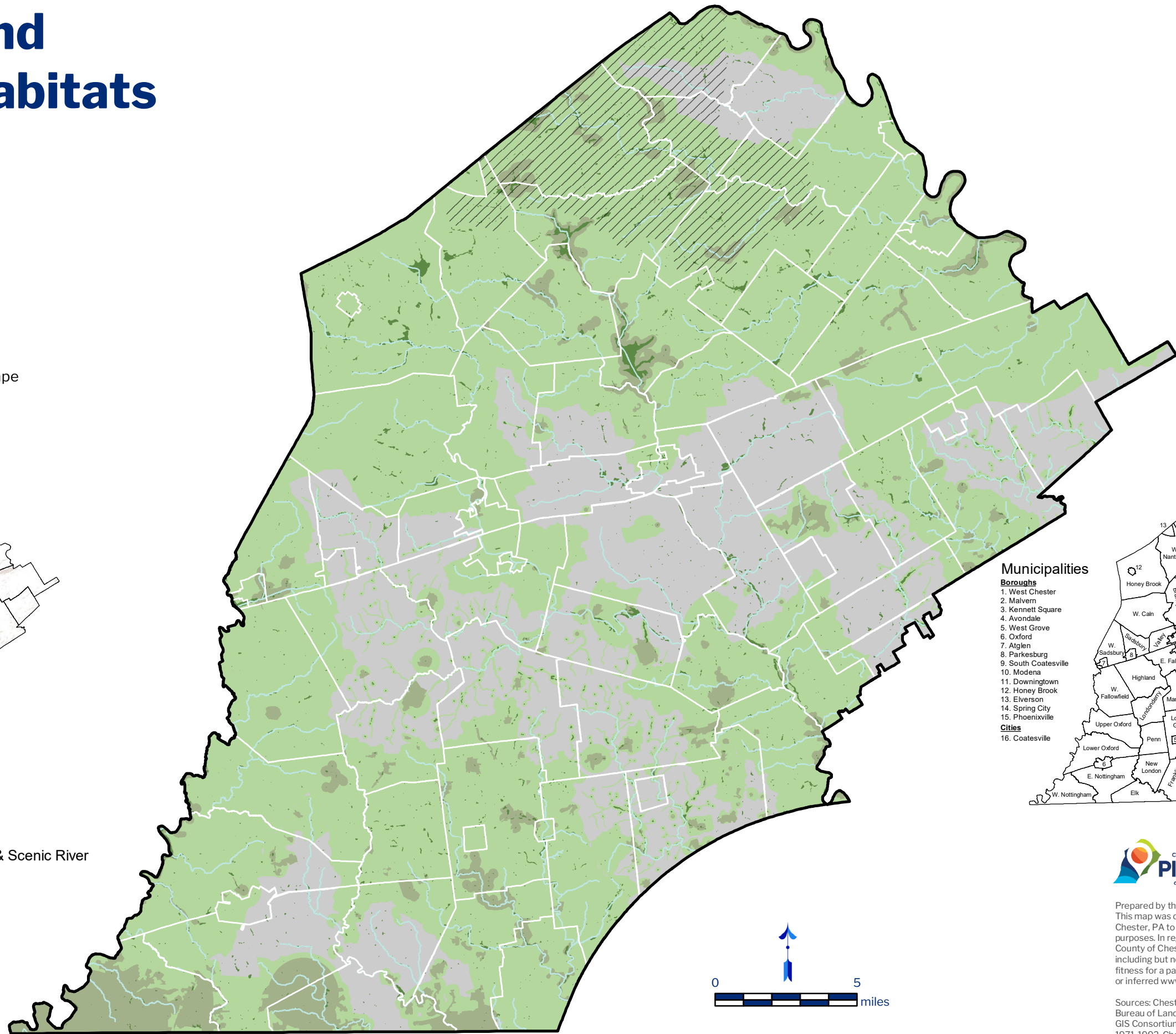


# Wetlands and Sensitive Habitats

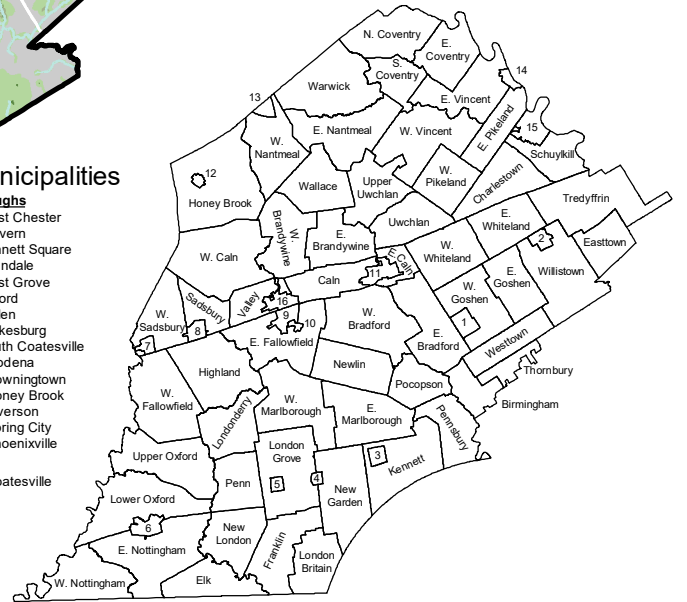
Chester County, PA



-  Streams
-  Hopewell Big Woods
-  NWI Wetlands
-  CNHI 2015 Core Habitat
-  CNHI 2015 Supporting Landscape



## Municipalities

- Boroughs**
1. West Chester
  2. Malvern
  3. Kennett Square
  4. Avondale
  5. West Grove
  6. Oxford
  7. Atglen
  8. Parkesburg
  9. South Coatesville
  10. Modena
  11. Downingtown
  12. Honey Brook
  13. Elverson
  14. Spring City
  15. Phoenixville
- Cities**
16. Coatesville

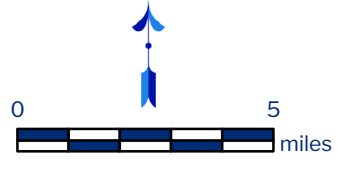


-  White Clay Creek National Wild & Scenic River
-  Nottingham County Park



Prepared by the Chester County Planning Commission, 2017. This map was digitally compiled for internal use by the County of Chester, PA to provide an index to parcels and for other reference purposes. In regards to the information or data furnished herein, County of Chester, PA makes no representation of any kind, including but not limited to, the warranties of merchantability or fitness for a particular use, nor are any such warranties to be implied or inferred [www.chescoplanning.org](http://www.chescoplanning.org).

Sources: Chester County Digital Land Base, Chester County Bureau of Land Records, 1997. Chester County GIS Department, GIS Consortium, 2006. US F&WS, National Wetlands Inventory, 1971-1992. Chester County Natural Heritage Inventory 2015. Chester County Planning Commission, 2009.



ratio = 1:237,600

Date: 6/27/2018