





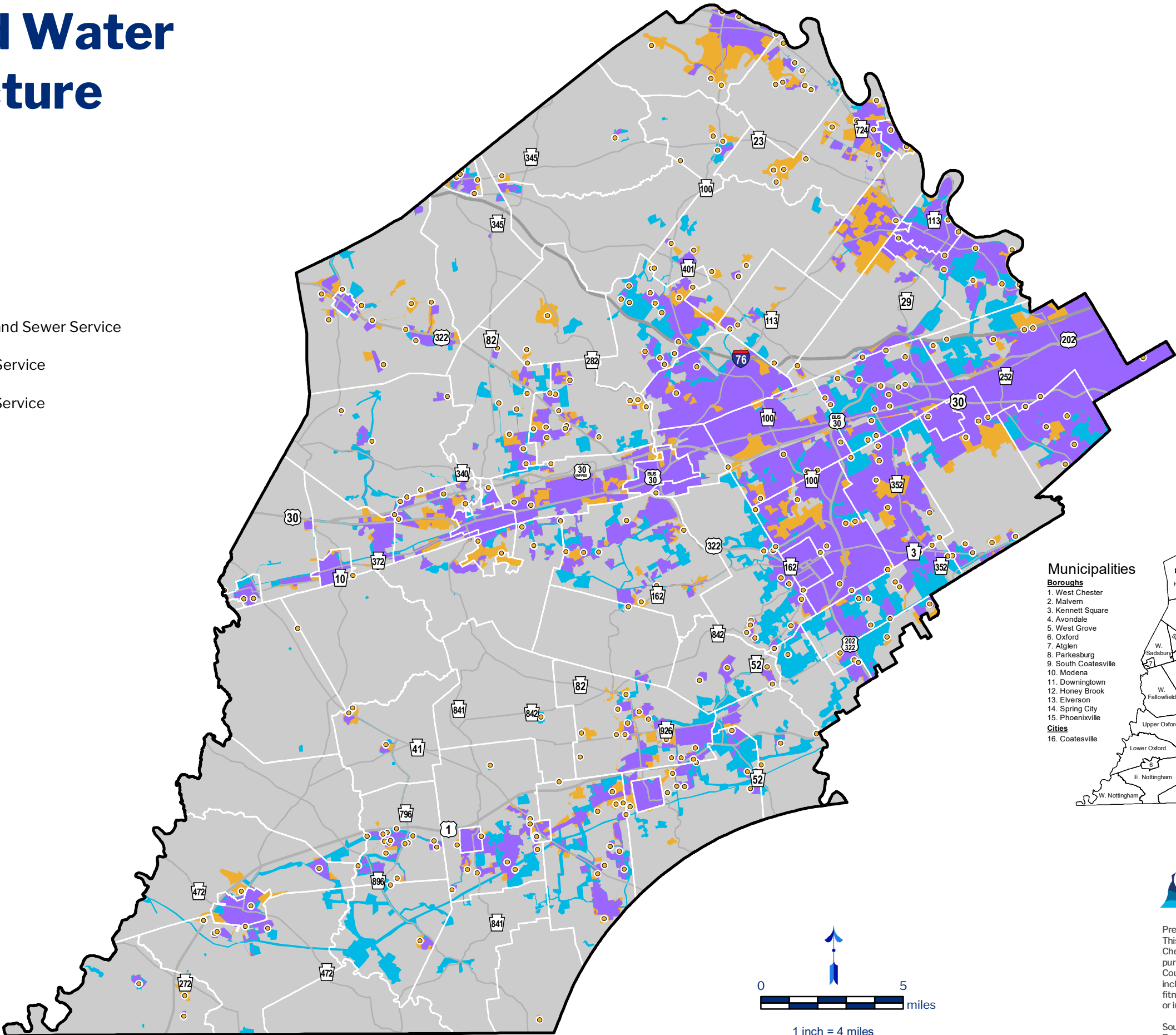
Sewer and Water Infrastructure

Chester County, PA

-  Wastewater Facilities
-  Area With Public Water and Sewer Service
-  Area With Public Sewer Service
-  Area With Public Water Service

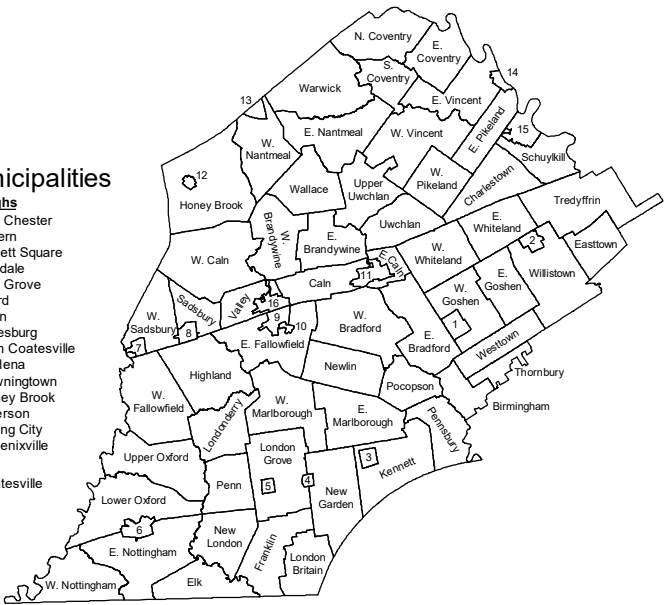
Major Roadways

-  Interstate Road
-  US Route
-  State Route



Municipalities

- Boroughs**
1. West Chester
 2. Malvern
 3. Kennett Square
 4. Avondale
 5. West Grove
 6. Oxford
 7. Atglen
 8. Parkesburg
 9. South Coatesville
 10. Modena
 11. Downingtown
 12. Honey Brook
 13. Elverson
 14. Spring City
 15. Phoenixville
- Cities**
16. Coatesville



Prepared by the Chester County Planning Commission, 2017. This map was digitally compiled for internal use by the County of Chester, PA to provide an index to parcels and for other reference purposes. In regards to the information or data furnished herein, County of Chester, PA makes no representation of any kind, including but not limited to, the warranties of merchantability or fitness for a particular use, nor are any such warranties to be implied or inferred www.chescoplanning.org.

Sources: Chester County Digital Land Base, Chester County Bureau of Land Records, 1997. Chester County GIS Department, GIS Consortium. 2006. CCHD.

