




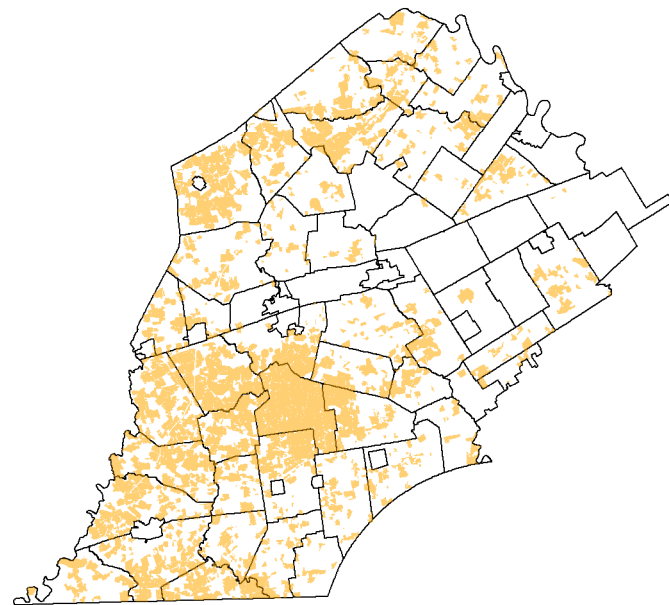


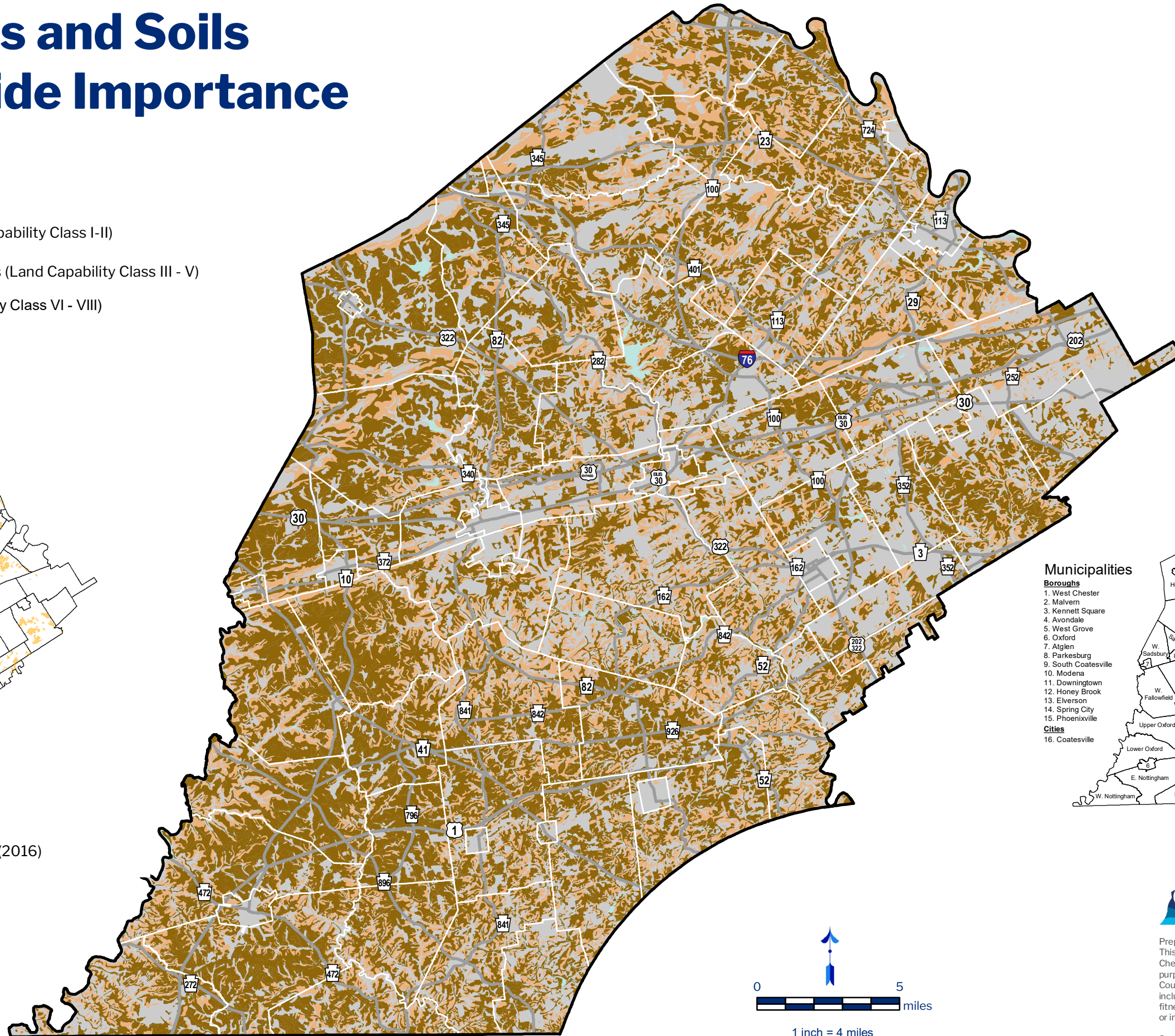
Prime Soils and Soils of Statewide Importance

Chester County, PA

-  Prime Farmland (Land Capability Class I-II)
-  Statewide Important Soils (Land Capability Class III - V)
-  Other Soils (Land Capability Class VI - VIII)
-  Waterbodies
-  Major Roads



-  Agricultural Security Area (2016)



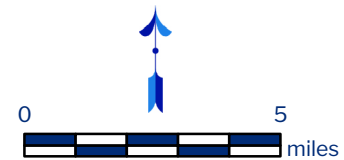
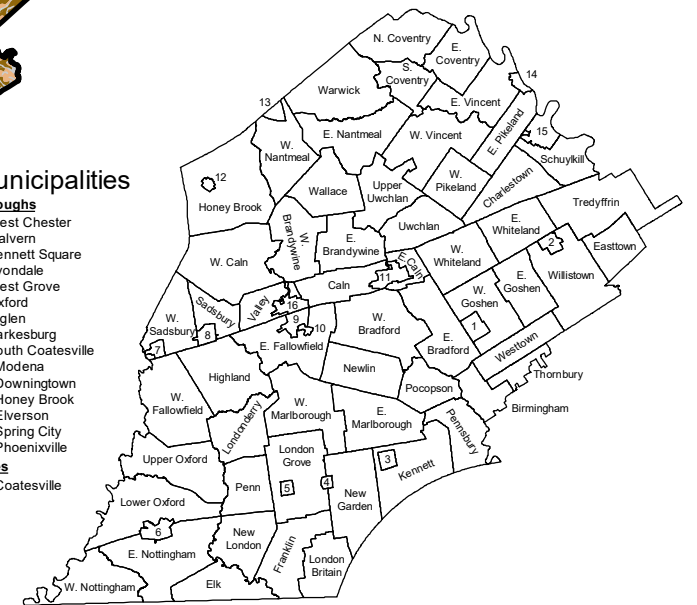
Municipalities

Boroughs

1. West Chester
2. Malvern
3. Kennett Square
4. Avondale
5. West Grove
6. Oxford
7. Atglen
8. Parkesburg
9. South Coatesville
10. Modena
11. Downingtown
12. Honey Brook
13. Elverson
14. Spring City
15. Phoenixville

Cities

16. Coatesville



1 inch = 4 miles
ratio = 1:237,600



Prepared by the Chester County Planning Commission, 2017. This map was digitally compiled for internal use by the County of Chester, PA to provide an index to parcels and for other reference purposes. In regards to the information or data furnished herein, County of Chester, PA makes no representation of any kind, including but not limited to, the warranties of merchantability or fitness for a particular use, nor are any such warranties to be implied or inferred www.chescoplanning.org.

Sources: Chester County Planning Commission 2017. USDA-NRCS, 2013.