

Appendix 14-A

Municipal Scenic Resources

Scenic Features, Vistas, Corridor, Roads, and Landforms

Scenic Categories and Characteristics

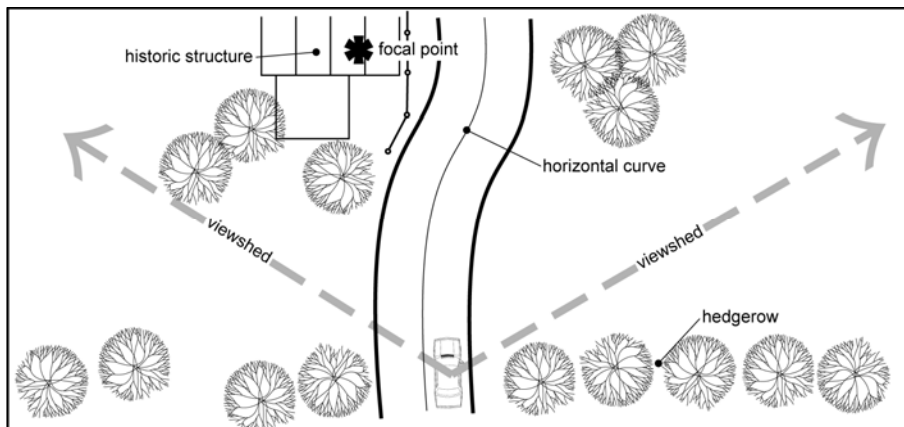
Five categories of scenic resources were identified for the Oxford Region: Scenic **Features**, Scenic **Vistas**, Scenic **Roadways** and **Corridors**, and Scenic **Landforms**. Each category has unique characteristics that separate it from the others, and together they are distinct from the related natural, historic, and agricultural resource categories. Scenic resources were selected broadly based on the representative nature of the Oxford Region’s landscapes, character, and cultural feel, and on the specific criteria of individual categories as noted below. Photographs and illustrations provided below offer further clarification on these types of resources.

SCENIC FEATURE: A specific feature, visible from multiple public viewpoints, but limited in overall geographic scale, that has inherent scenic or aesthetic value. Stone walls or covered or stone bridges would be examples of scenic features.



SCENIC VISTA (or VIEWSHED): A physiographic area composed of natural, historic, agricultural, and/or cultural elements that may be viewed from a public area such as a roadway or park, and which has inherent scenic qualities and/or aesthetic values. See Figure below.

Scenic Vista or Viewshed



SCENIC ROAD: A road that, in addition to its transportation function, provides a unique traveling experience as a result of the characteristics of the road itself that may include its narrow width, a canopy of trees, or the informal nature of the road's alignment.



SCENIC CORRIDOR: A corridor such as a roadway or waterway and its adjacent area that provides opportunities for the enjoyment of exceptional beauty or natural, historic, or cultural features. For the purposes of this Plan, the scenic corridor can include scenic features within view of the roadway or waterway.



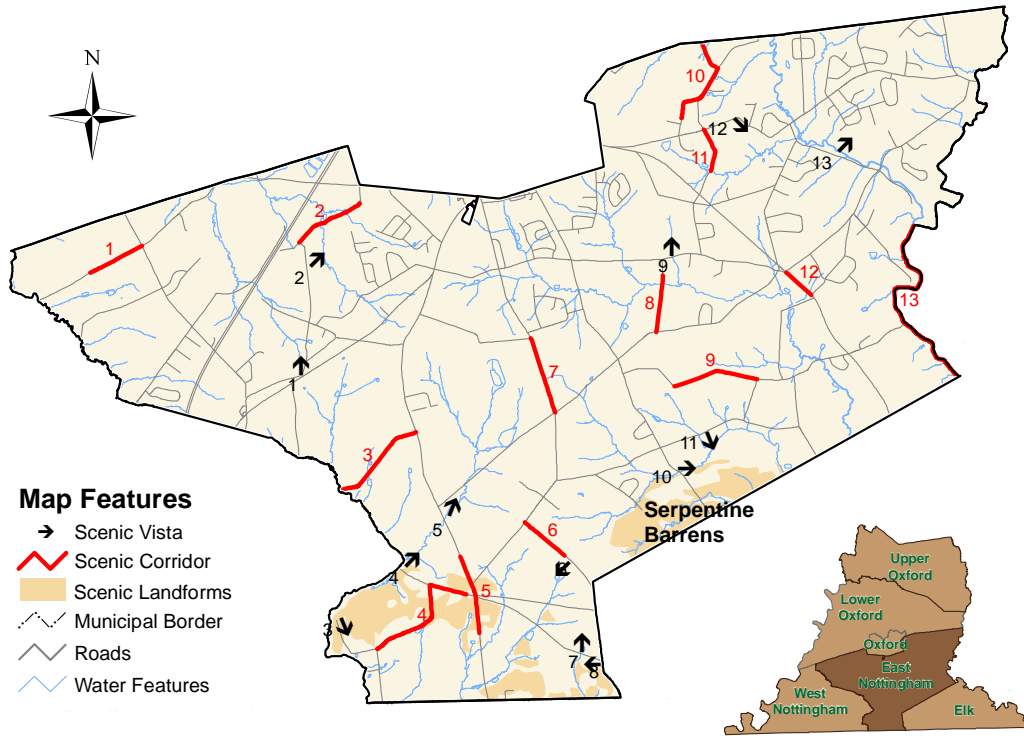
A scenic corridor moves the experience of the driver, pedestrian, cyclist, fisherman, or boater beyond the immediate area to those attributes within view.

SCENIC LANDFORMS: A broad geographic area that has some consistency in form throughout and which forms a significant, scenic landscape. Only two landforms have been identified in the Region, the serpentine barrens and the Route 10 ridgeline, both of which contain scenic features or vistas within their bounds.

This appendix includes municipal resources and corresponding mapping by individual municipality. The listing includes a category type, an identification number (within each category type), tables that identify each of those resources, and prominent features of the resource. As a result, each individual scenic resource can be located and its' most important characteristic identified. This listing will enable each municipality to protect their resources to the fullest extent desired.



East Nottingham Township Scenic Resources



Scenic Corridor	
ID	Feature
1	Natural
2	Natural
3	Natural
4	Natural
5	Natural
6	Natural
7	Natural
8	Natural
9	Natural
10	Natural
11	Natural
12	Natural

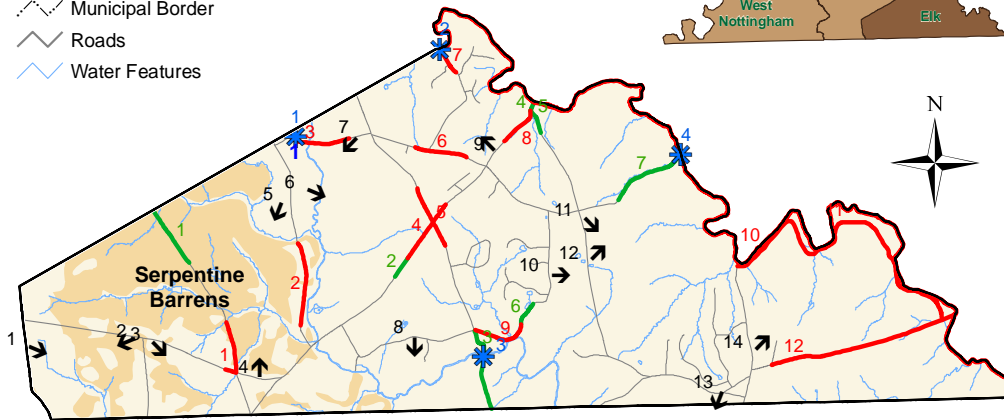
Scenic Vistas		
ID	Direction	Feature
1	N	Pond/Creek
2	NE	Ag/Creek
3	SSE	Woodlands
4	NE	Ag/Creek
5	NNE	Creek
6	SW	Pond/Ag
7	N	Pond
8	W	Agriculture
9	N	Creek/Ag
10	E	Agriculture
11	SSE	Creek/Ag
12	Se	Agriculture
13	NE	Creek

Scenic Landforms	
ID	Feature
1	Serpentine Barrens

Elk Township Municipal Scenic Resources

Map Features

-  Scenic Feature
-  Scenic Vista
-  Scenic Corridor
-  Scenic Road
-  Scenic Landforms
-  Municipal Border
-  Roads
-  Water Features



Scenic Vistas		
ID	Direction	Feature
1	ESE	Agriculture
2	WSW	Agriculture
3	SE	Agriculture
4	N	Woodlands
5	SSW	Agriculture
6	ESE	Creek/Pasture
7	SW	Agriculture
8	S	Pasture
9	NW	Woodlands
10	E	Pasture
11	SE	Agriculture
12	NE	Agriculture
13	SSW	Agriculture
14	NE	Pond/Woodlands

Scenic Landforms	
ID	Feature
1	Serpentine Barrens

Scenic Features	
ID	Feature
1	Friends Meeting House and Cemetary
2	Linton Steven's Covered Bridge
3	Glen Hope Covered Bridge
4	Rudolph & Arthur Covered Bridge

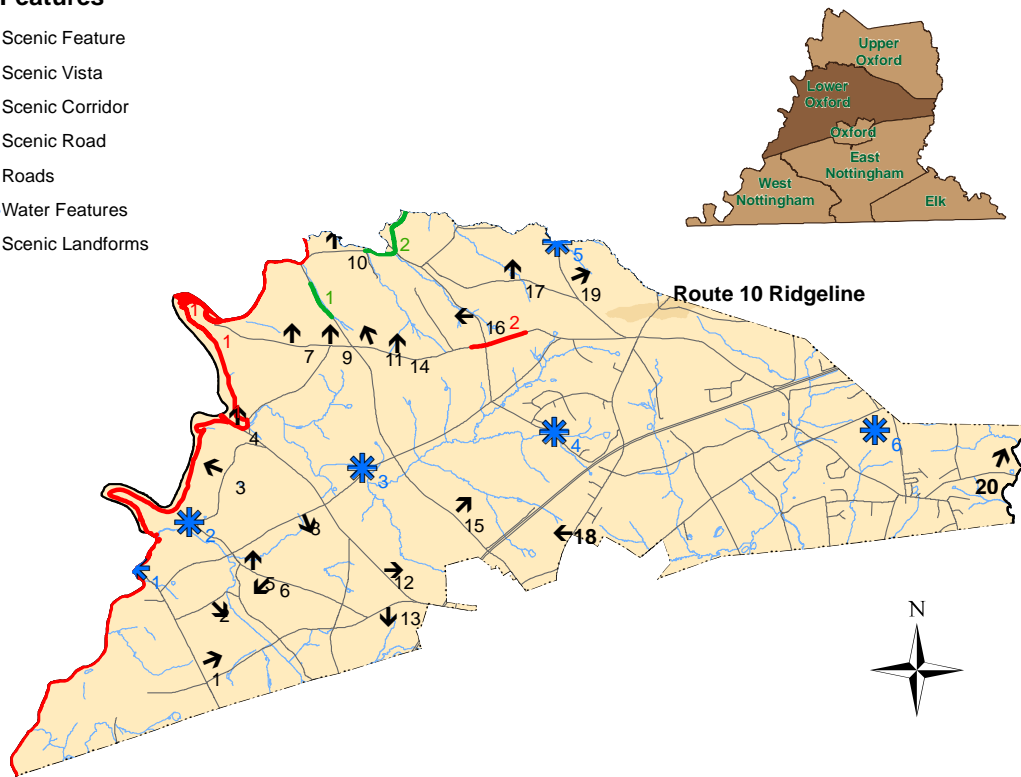
Scenic Corridor	
ID	Feature
1	Natural
2	Natural
3	Natural
4	Agriculture
5	Agriculture
6	Agriculture
7	Natural
8	Natural
9	Natural
10	Big Elk Creek
11	Springlawn Trail
12	Ag/Natural

Scenic Road	
ID	Feature
1	Canopy Covered
2	Canopy Covered
3	Canopy Covered
4	Canopy Covered
5	Canopy Covered
6	Canopy Covered
7	Canopy Covered

Lower Oxford Township Municipal Scenic Resources

Map Features

-  Scenic Feature
-  Scenic Vista
-  Scenic Corridor
-  Scenic Road
-  Roads
-  Water Features
-  Scenic Landforms



Scenic Vistas		
ID	Direction	Feature
1	ENE	Ag/Woods
2	SE	Agriculture
3	WNW	Ag/Woodlands
4	N	Pond/Creek
5	N	Ag/Creek
6	SW	Ag/Creek
7	N	Ag/Woods
8	SSE	Ag/Creek
9	N	Agriculture
10	N	Ag/Woods
11	NNW	Agriculture
12	E	Agriculture
13	S	Ag/Creek
14	N	Ag/Woods
15	NE	Ag/Woodlands
16	W	Agriculture
17	N	Pond
18	W	Agriculture
19	ENE	Agriculture
20	NNE	Ag/Woods

Scenic Features	
ID	Feature
1	Pine Grove Covered Bridge
2	Camp Tweedale
3	Stone Arch Bridge
4	Stone Arch Bridge
5	Stone Arch Bridge
6	Lincoln University

Scenic Road	
ID	Feature
1	Canopy Covered
2	Canopy Covered

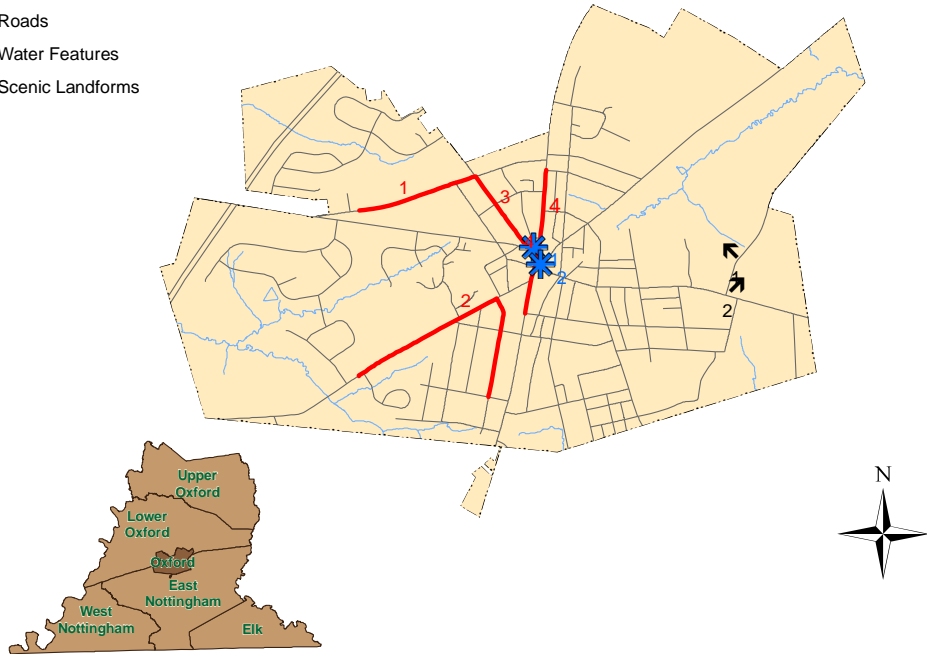
Scenic Corridor	
ID	Feature
1	Octoraro Creek
2	Natural

Scenic Landform	
ID	Feature
1	Route 10 Ridgeline

Oxford Borough Municipal Scenic Resources

Map Features

-  Scenic Feature
-  Scenic Vista
-  Scenic Corridor
-  Scenic Road
-  Roads
-  Water Features
-  Scenic Landforms

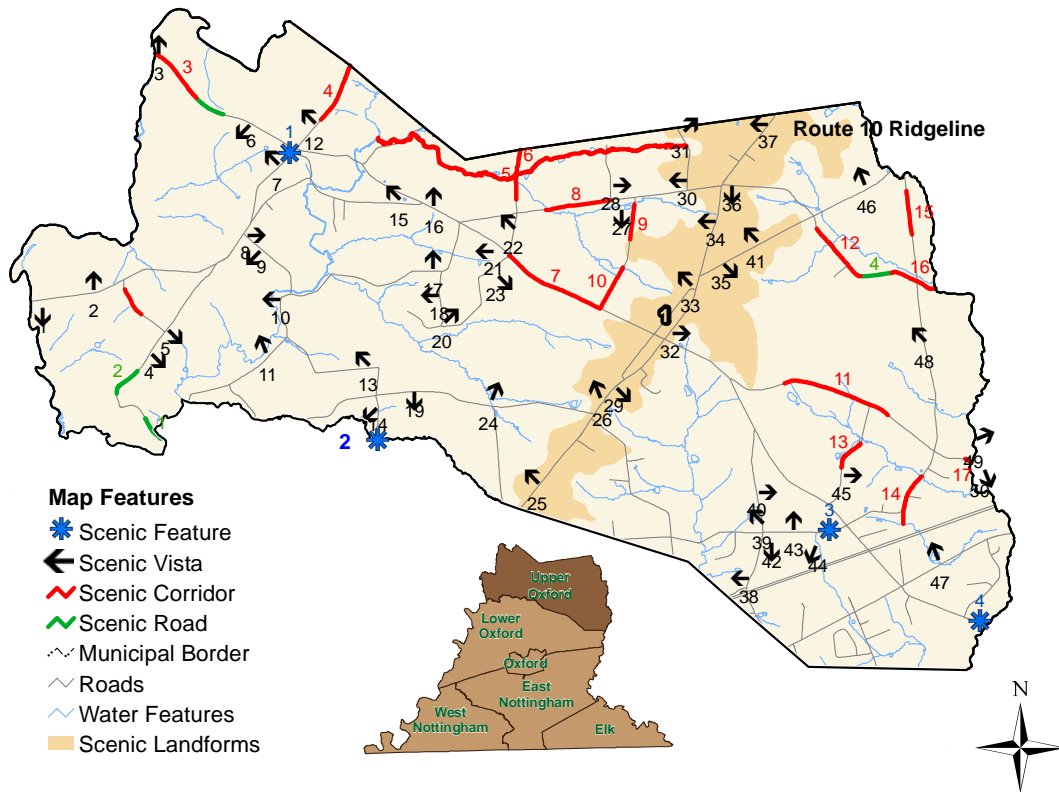


Scenic Vistas		
ID	Direction	Feature
1	NW	Agriculture
2	NE	Agriculture

Scenic Features	
ID	Feature
1	Village Green
2	Oxford Hotel

Scenic Corridor	
ID	Feature
1	Natural
2	Historic/Character
3	Historic/Character
4	Historic/Character

Upper Oxford Township Municipal Scenic Resources



Scenic Vistas					
ID	Direction	Feature	ID	Direction	Feature
1	S	Creek/Woodland	25	NW	Agriculture
2	N	Ag/Woodland	26	NNW	Ag/Woodland
3	N	Creek	27	S	Pond/Ag/Creek
4	SE	Ag/Woodland	28	E	Agriculture
5	SE	Creek/Pond	29	SE	Ag/Woodland
6	SW	Agriculture	30	W	Agriculture
7	NW	Agriculture	31	NE	Agriculture
8	E	Ag/Pasture	32	E	Agriculture
9	SW	Agriculture	33	NW	Agriculture
10	W	Creek	34	W	Agriculture
11	NNW	Creek/Pasture	35	SE	Agriculture
12	NW	Agriculture	36	S	Agriculture
13	NW	Agriculture	37	W	Agriculture
14	SW	Pasture/Creek	38	W	Ag/Creek
15	NW	Woodland	39	NW	Pond
16	N	Agriculture	40	E	Agriculture
17	N	Ag/Creek	41	NW	Agriculture
18	W	Ag/Woodland	42	S	Agriculture
19	S	Pasture/Woodland	43	N	Ag/Pasture
20	NE	Agriculture	44	SSW	Ag/Woodland
21	W	Ag/Pond	45	E	Ag/Woodland
22	NW	Agriculture	46	NNW	Agriculture
23	SE	Agriculture	47	NNW	Pond
24	NNE	Creek	48	NW	Agriculture

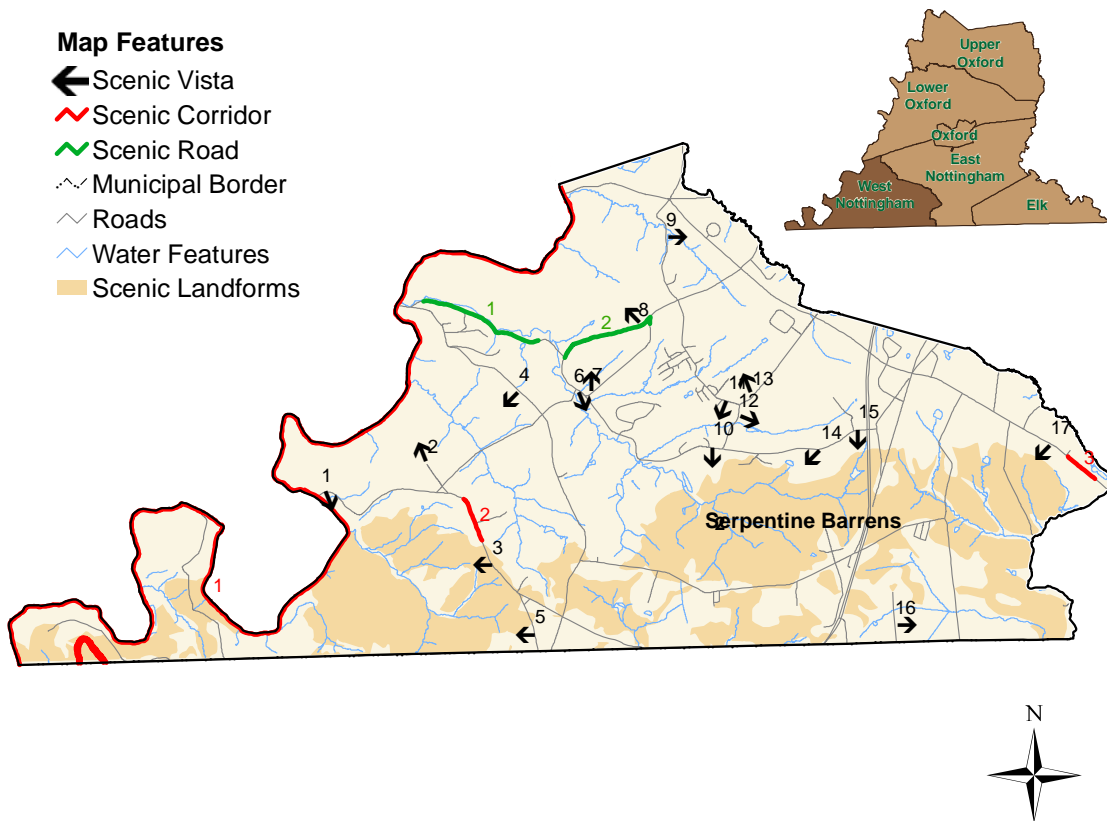
Scenic Corridor	
ID	Feature
1	Ag/Natural
2	Octoraro Creek
3	Natural
4	Ag/Natural
5	Ag/Natural
6	Rattlesnake Run
7	Agriculture
8	Agriculture
9	Ag/Natural
10	Ag/Natural
11	Ag/Natural
12	Natural
13	Ag/Natural
14	Natural
15	Ag/Natural
16	Natural
17	Natural

Scenic Road	
ID	Feature
1	Canopy Covered
2	Canopy Covered
3	Canopy Covered
4	Canopy Covered

Scenic Landforms	
ID	Feature
1	Route 10 Ridgeline

Scenic Features	
ID	Feature
1	Stone Arch Bridge
2	Old Stone Mill
3	Friends Meeting House
4	Church and Cemetery

West Nottingham Municipal Scenic Resources



Scenic Vistas		
ID	Direction	Feature
1	SSE	Pasture/Woodlands
2	NNW	Woodlands
3	W	Woodlands
4	SW	Agriculture
5	W	Agriculture
6	SSE	Creek/Pasture
7	N	Ag/Creek
8	NW	Agriculture
9	E	Creek/Pond
10	S	Ag/Woodlands
11	SSW	Agriculture
12	ESE	Agriculture
13	NNW	Agriculture
14	SW	Ag/Woodlands
15	S	Creek/Pond
16	E	Agriculture
17	SW	Agriculture

Scenic Landforms	
ID	Feature
1	Serpentine Barrens

Scenic Roads	
ID	Feature
1	Canopy Covered
2	Canopy Covered

Scenic Corridor	
ID	Feature
1	Octoraro Creek
2	Natural
3	Natural