

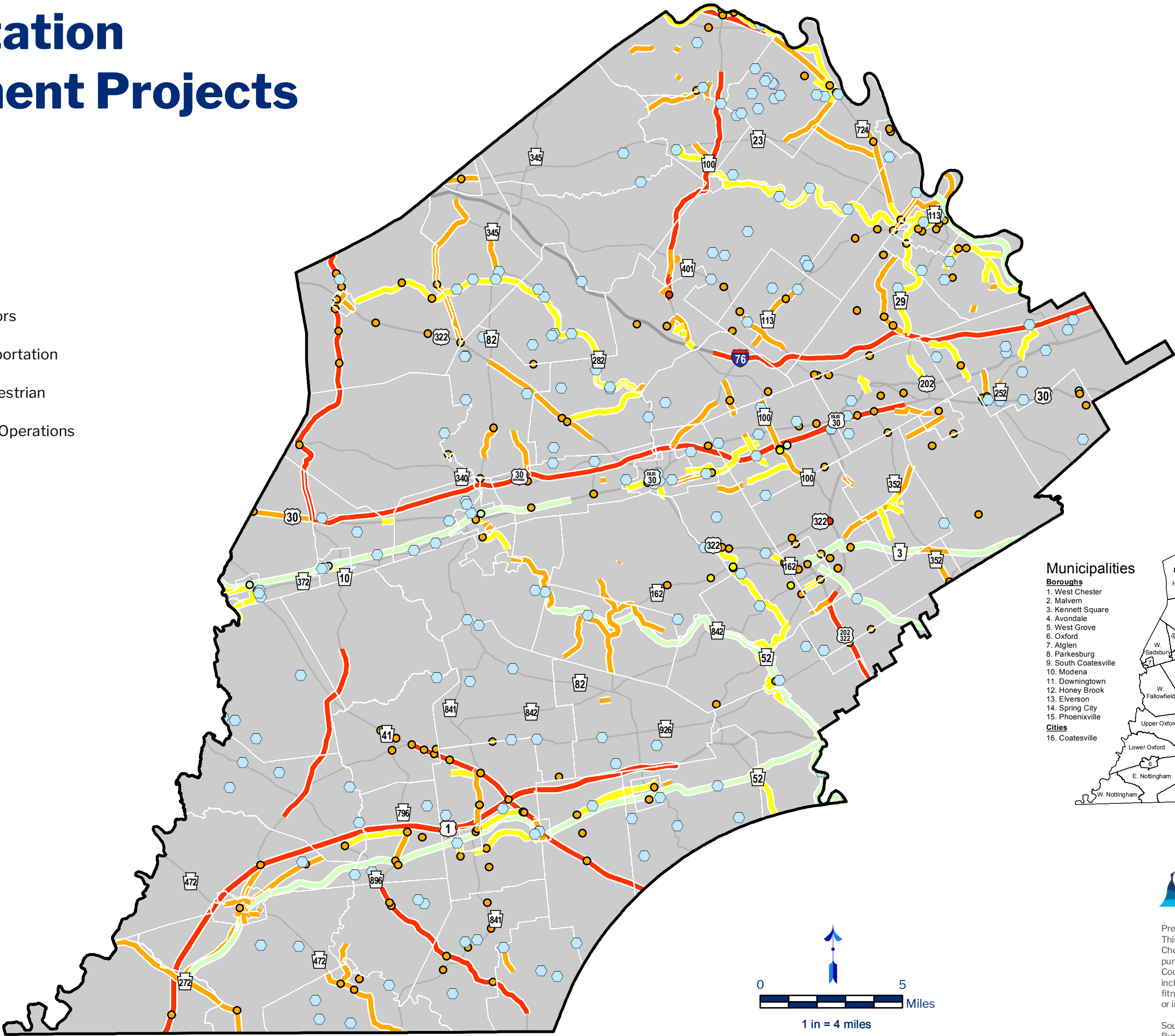
# Transportation Improvement Projects

Chester County, PA



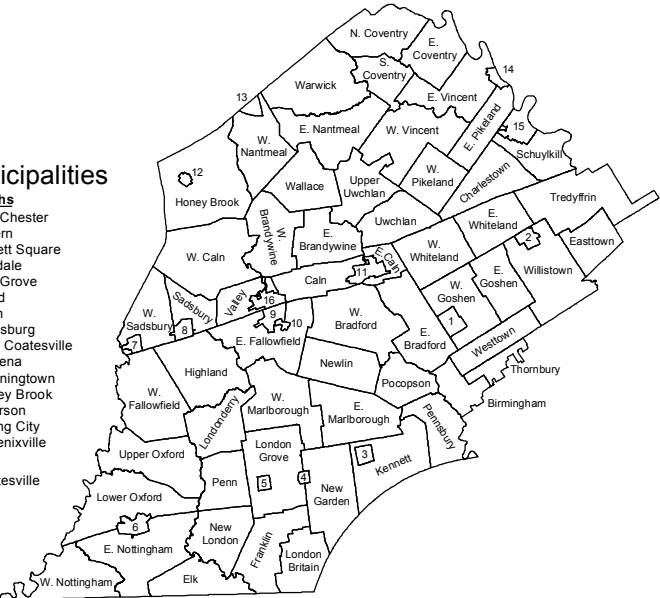
TII Project Type

- Major Corridors
- Public Transportation
- Bicycle / Pedestrian
- Roadways & Operations
- Bridges
- Interstate Routes
- US Routes
- PA Routes



Municipalities

- Boroughs**
1. West Chester
  2. Malvern
  3. Kennett Square
  4. Avondale
  5. West Grove
  6. Oxford
  7. Atglen
  8. Parkesburg
  9. South Coatesville
  10. Modena
  11. Downingtown
  12. Honey Brook
  13. Elversham
  14. Spring City
  15. Phoenixville
  16. Coatesville
- Cities**



Prepared by the Chester County Planning Commission, 2017.  
This map was digitally compiled for internal use by the County of Chester, PA to provide an index to parcels and for other reference purposes. In regards to the information or data furnished herein, County of Chester, PA makes no representation of any kind, including but not limited to, the warranties of merchantability or fitness for a particular use, nor are any such warranties to be implied or inferred [www.chescoplanning.org](http://www.chescoplanning.org).

Sources: Chester County Digital Land Base, Chester County Bureau of Land Records, 1997. Chester County GIS Department, GIS Consortium. 2017.

