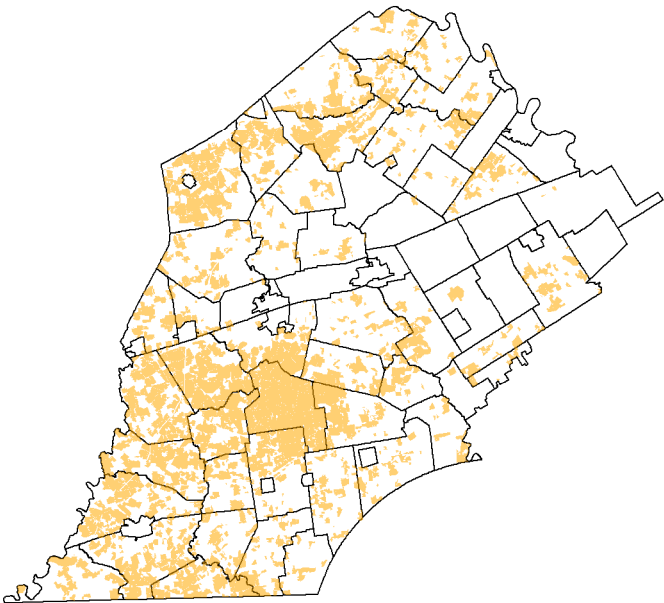


Prime Soils and Soils of Statewide Importance

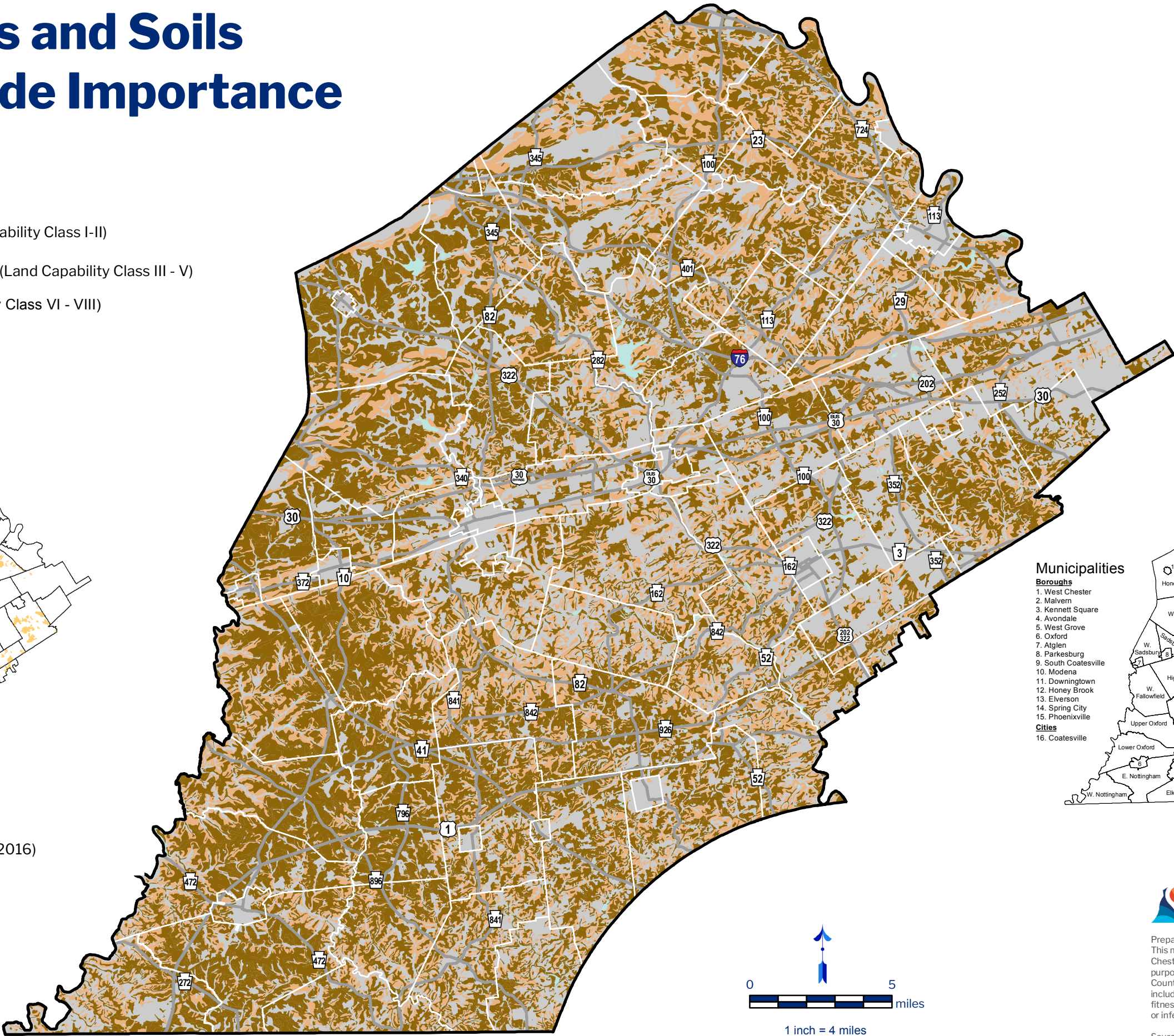
Chester County, PA



- Prime Farmland (Land Capability Class I-II)
- Statewide Important Soils (Land Capability Class III - V)
- Other Soils (Land Capability Class VI - VIII)
- Waterbodies
- Major Roads

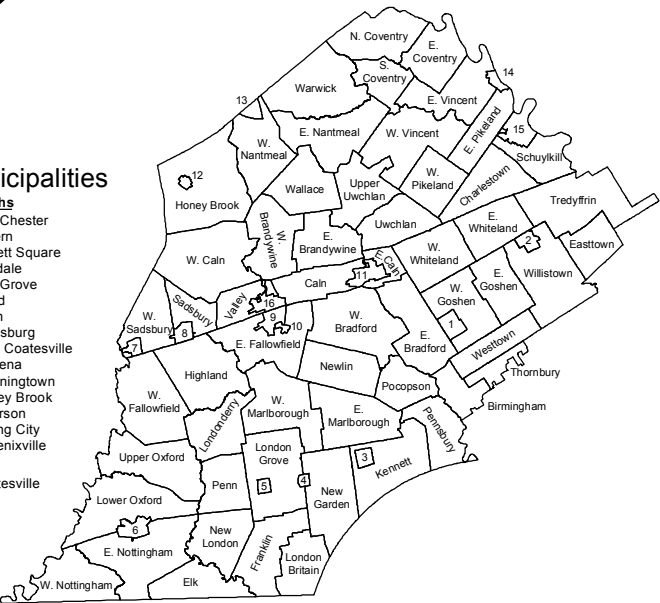


Agricultural Security Area (2016)



Municipalities

- Boroughs**
1. West Chester
 2. Malvern
 3. Kennett Square
 4. Avondale
 5. West Grove
 6. Oxford
 7. Atglen
 8. Parkesburg
 9. South Coatesville
 10. Modena
 11. Downingtown
 12. Honey Brook
 13. Elverson
 14. Spring City
 15. Phoenixville
- Cities**
16. Coatesville



Prepared by the Chester County Planning Commission, 2017. This map was digitally compiled for internal use by the County of Chester, PA to provide an index to parcels and for other reference purposes. In regards to the information or data furnished herein, County of Chester, PA makes no representation of any kind, including but not limited to, the warranties of merchantability or fitness for a particular use, nor are any such warranties to be implied or inferred www.chescoplanning.org.

Sources: Chester County Planning Commission 2017. USDA-NRCS, 2013.

