

Parks and Recreation

Chester County, PA



- Existing Surfaced Trails
- County Parks
- National Historic Parks
- State Parks
- Municipal Recreation (Active and Passive)
- State Preserve Lands

County Parks

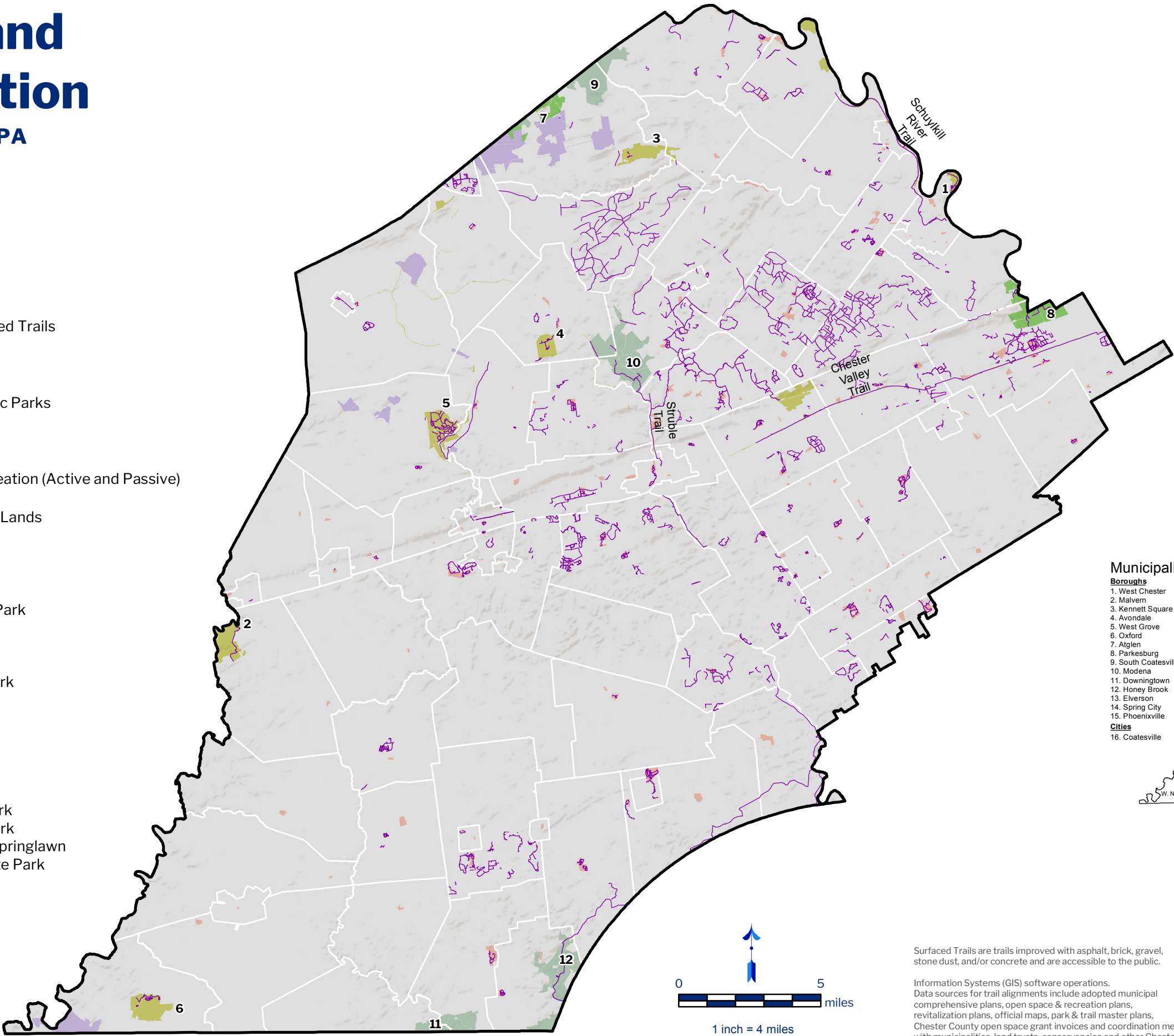
- 1. Black Rock Sanctuary
- 2. Wolf's Hollow County Park
- 3. Warwick County Park
- 4. Springton Manor Farm
- 5. Hibernia County Park
- 6. Nottingham County Park

National Historic Parks

- 7. Hopewell Furnace
- 8. Valley Forge

State Parks

- 9. French Creek State Park
- 10. Marsh Creek State Park
- 11. Future State Park at Springlawn
- 12. White Clay Creek State Park



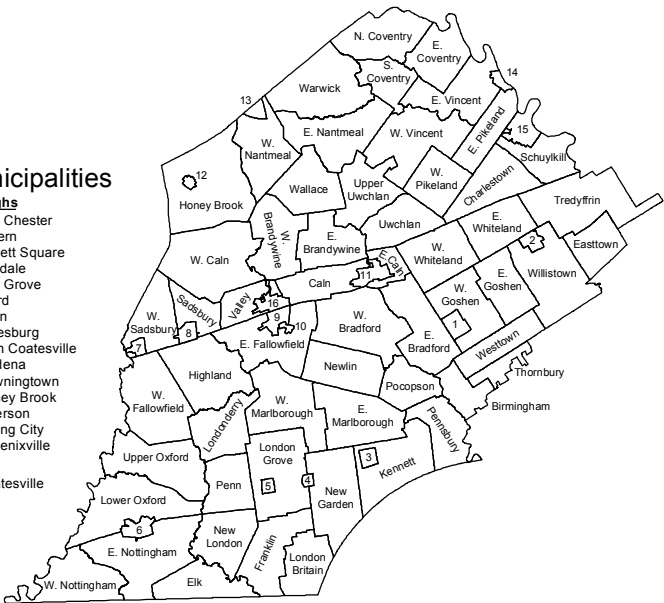
Municipalities

Boroughs

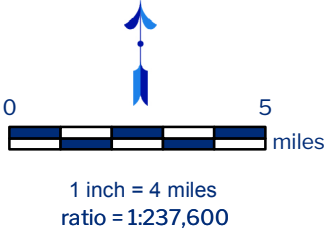
- 1. West Chester
- 2. Malvern
- 3. Kennett Square
- 4. Avondale
- 5. West Grove
- 6. Oxford
- 7. Atglen
- 8. Parkesburg
- 9. South Coatesville
- 10. Modena
- 11. Downingtown
- 12. Honey Brook
- 13. Elverson
- 14. Spring City
- 15. Phoenixville
- 16. Coatesville

Cities

- 16. Coatesville



Date: 10/25/2017



Surfaced Trails are trails improved with asphalt, brick, gravel, stone dust, and/or concrete and are accessible to the public.

Information Systems (GIS) software operations. Data sources for trail alignments include adopted municipal comprehensive plans, open space & recreation plans, revitalization plans, official maps, park & trail master plans, Chester County open space grant invoices and coordination meetings with municipalities, land trusts, conservancies and other Chester County departments.



Prepared by the Chester County Planning Commission, 2017. This map was digitally compiled for internal use by the County of Chester, PA to provide an index to parcels and for other reference purposes. In regards to the information or data furnished herein, County of Chester, PA makes no representation of any kind, including but not limited to, the warranties of merchantability or fitness for a particular use, nor are any such warranties to be implied or inferred www.chescoplanning.org.

Sources: Chester County Planning Commission, 2017.