

# 2015 Generalized Land Use

Chester County, PA



Residential

(Single Family, Multi Family, Row Homes, Mobile Homes.)

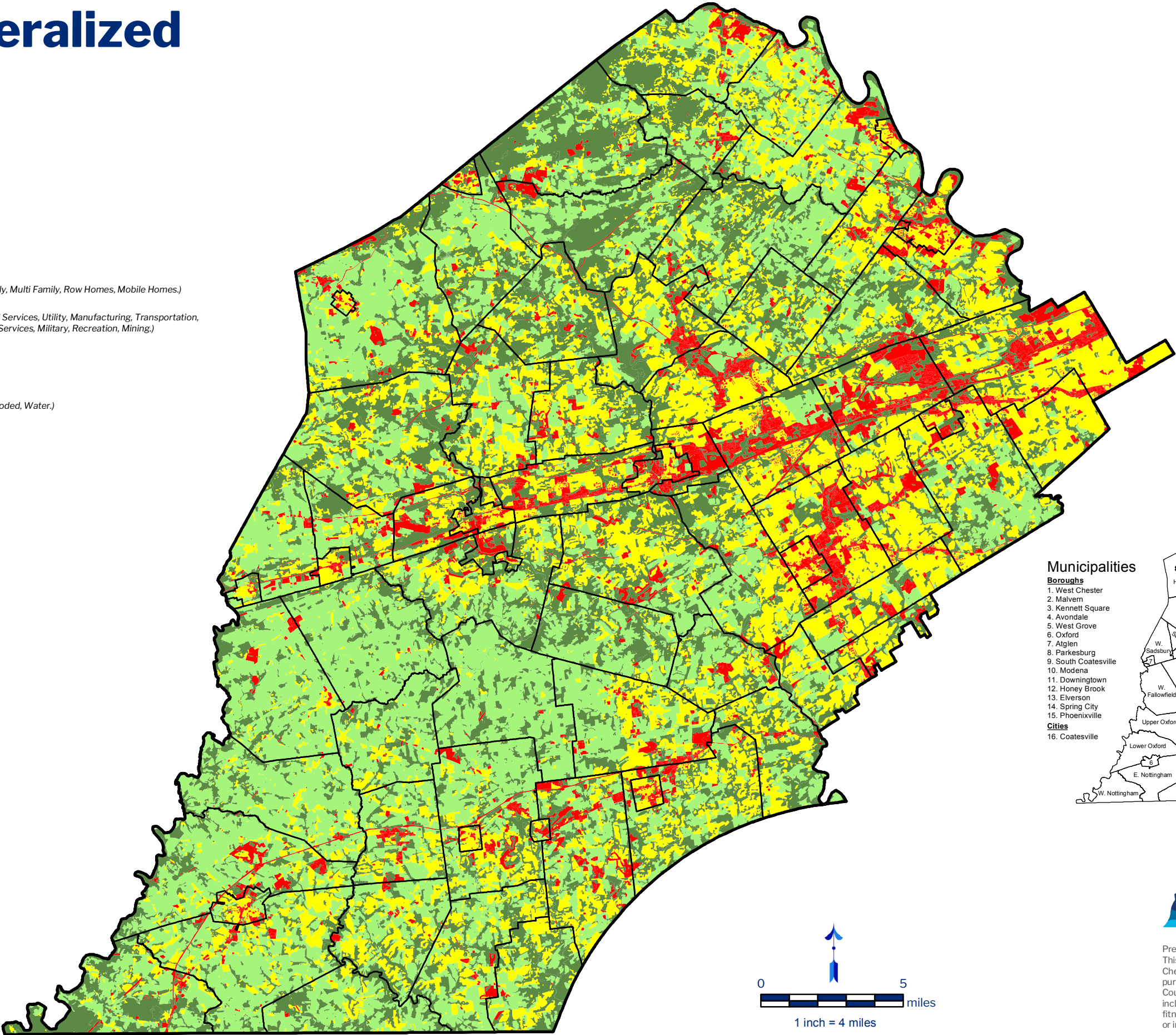
Non-Residential

(Commercial Services, Utility, Manufacturing, Transportation, Community Services, Military, Recreation, Mining.)

Agriculture

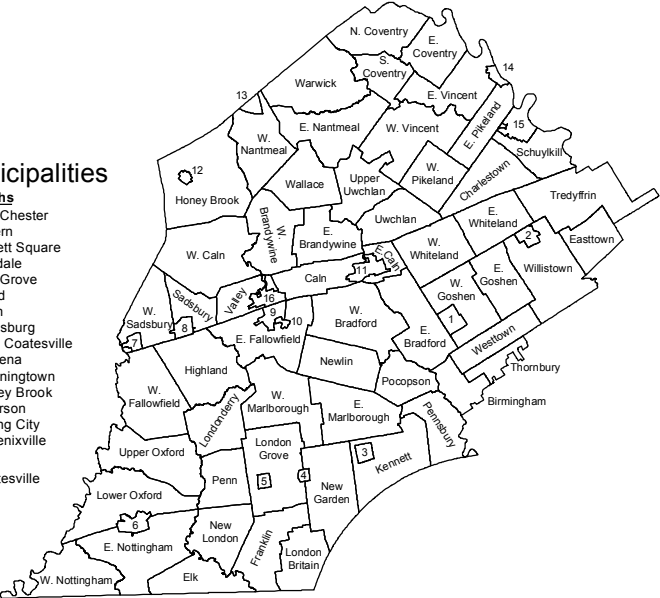
Undeveloped

(Vacant, Wooded, Water.)



Municipalities

- Boroughs**
- 1. West Chester
  - 2. Malvern
  - 3. Kennett Square
  - 4. Avondale
  - 5. West Grove
  - 6. Oxford
  - 7. Atglen
  - 8. Parkesburg
  - 9. South Coatesville
  - 10. Modena
  - 11. Downingtown
  - 12. Honey Brook
  - 13. Elversham
  - 14. Spring City
  - 15. Phoenixville
- Cities**
- 16. Coatesville



0

5

miles

1 inch = 4 miles

ratio = 1:237,600

Date: 10/25/2017



Prepared by the Chester County Planning Commission, 2017.  
This map was digitally compiled for internal use by the County of Chester, PA to provide an index to parcels and for other reference purposes. In regards to the information or data furnished herein, County of Chester, PA makes no representation of any kind, including but not limited to, the warranties of merchantability or fitness for a particular use, nor are any such warranties to be implied or inferred [www.chescoplanning.org](http://www.chescoplanning.org).

Sources: Delaware Valley Regional Planning Commission, 2015.