

2005 Generalized Land Use

Chester County, PA

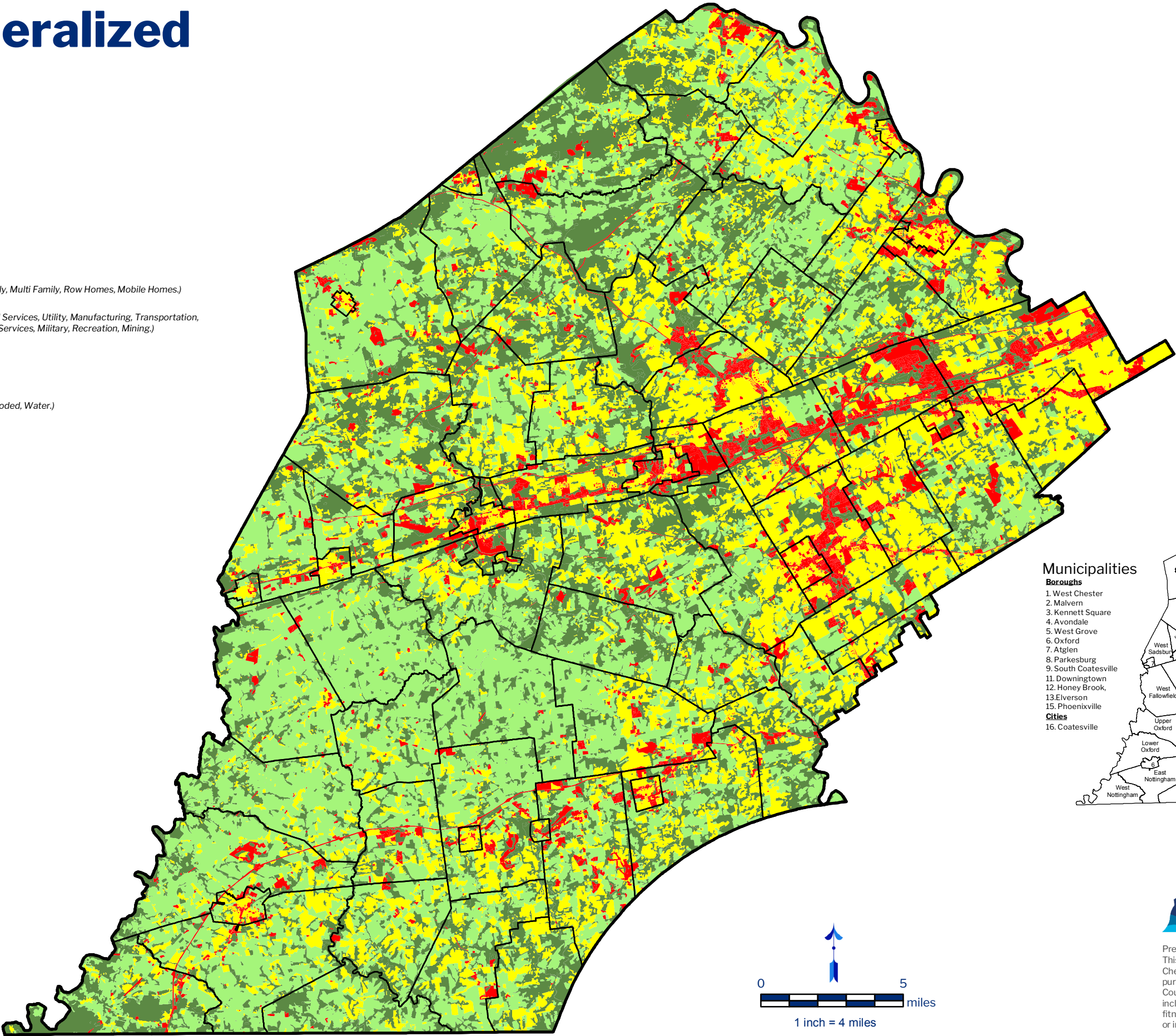


- Residential

(Single Family, Multi Family, Row Homes, Mobile Homes.)
- Non-Residential

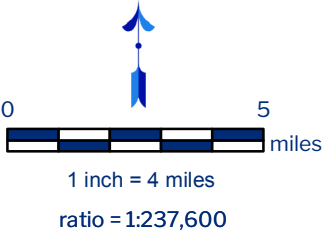
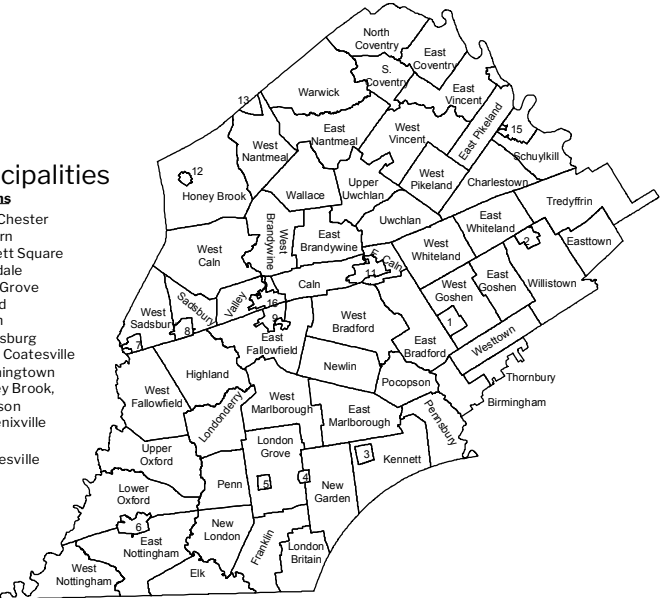
(Commercial Services, Utility, Manufacturing, Transportation, Community Services, Military, Recreation, Mining.)
- Agriculture
- Undeveloped

(Vacant, Wooded, Water.)



Municipalities

- Boroughs**
- 1. West Chester
 - 2. Malvern
 - 3. Kennett Square
 - 4. Avondale
 - 5. West Grove
 - 6. Oxford
 - 7. Atglen
 - 8. Parkesburg
 - 9. South Coatesville
 - 11. Downingtown
 - 12. Honey Brook
 - 13. Elverson
 - 15. Phoenixville
- Cities**
- 16. Coatesville



Date: 10/25/2017



Prepared by the Chester County Planning Commission, 2017.
This map was digitally compiled for internal use by the County of Chester, PA to provide an index to parcels and for other reference purposes. In regards to the information or data furnished herein, County of Chester, PA makes no representation of any kind, including but not limited to, the warranties of merchantability or fitness for a particular use, nor are any such warranties to be implied or inferred www.chescoplanning.org.
Sources: Delaware Valley Regional Planning Commission, 2005.