

# Historic Resources

Chester County, PA



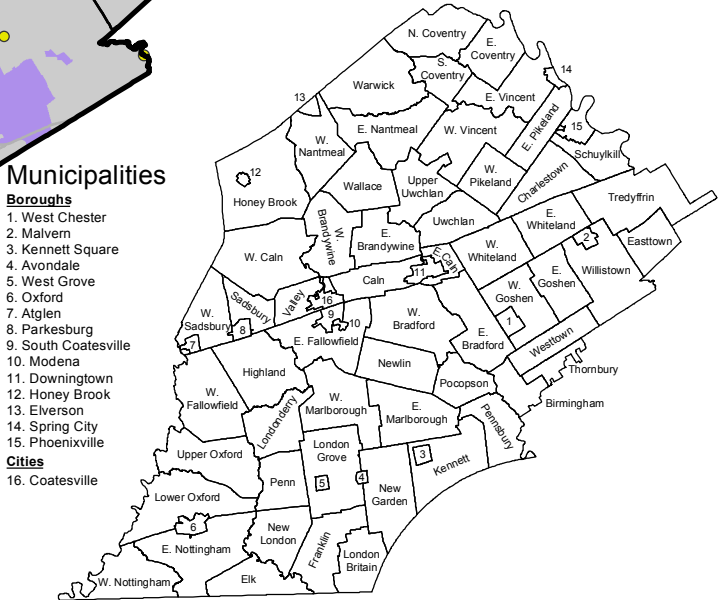
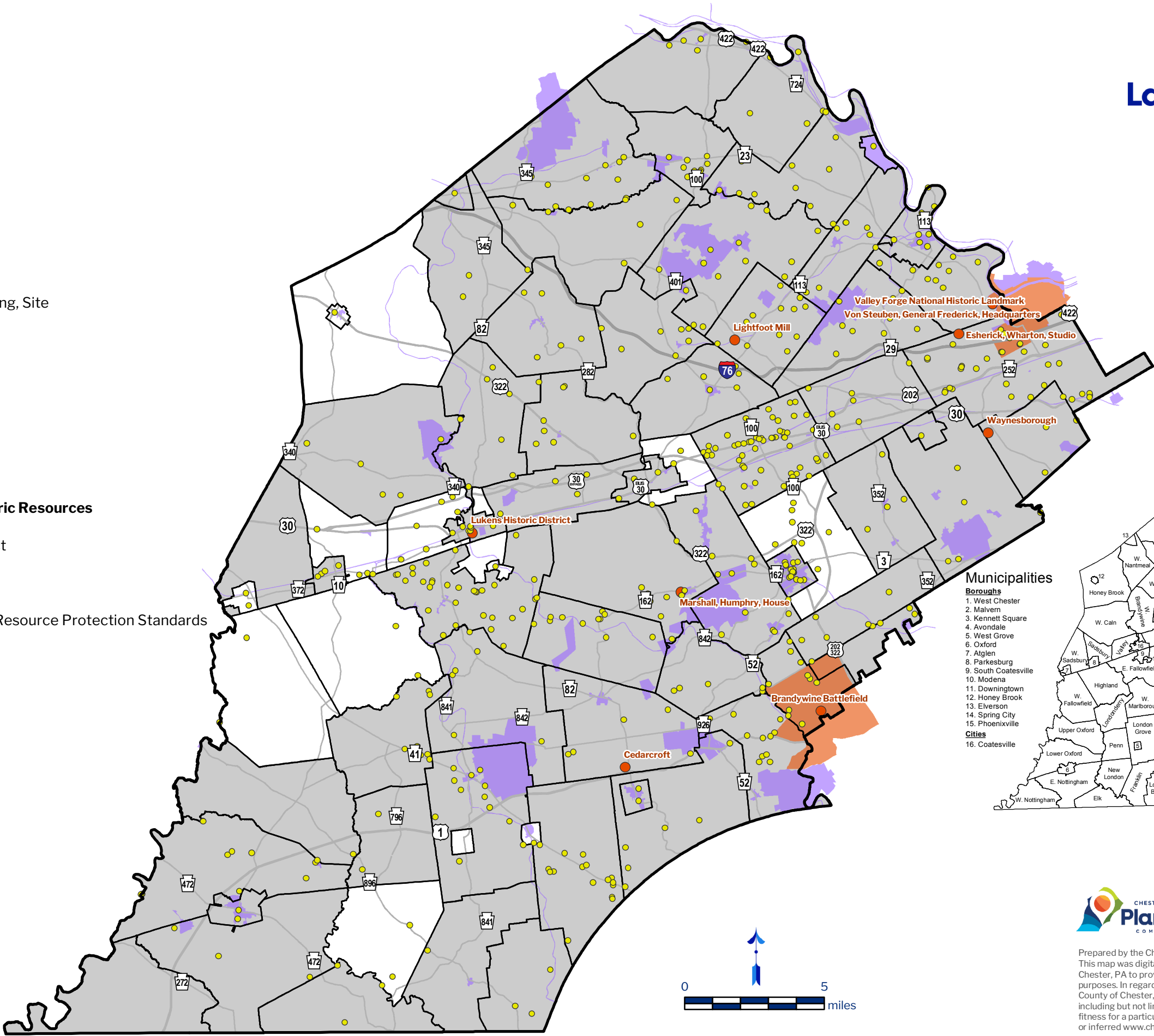
- National Register Structure, Building, Site
- National Historic Landmark

Major Roadways

- Interstate Road
- US Route
- State Route

National Register Eligible and Listed Historic Resources

- National Historic Landmark District
- National Register Historic District
- Municipalities with Local Historic Resource Protection Standards



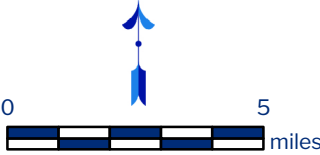
Municipalities

- Boroughs**
1. West Chester
  2. Malvern
  3. Kennett Square
  4. Avondale
  5. West Grove
  6. Oxford
  7. Atglen
  8. Parkesburg
  9. South Coatesville
  10. Modena
  11. Downingtown
  12. Honey Brook
  13. Elversham
  14. Spring City
  15. Phoenixville
- Cities**
16. Coatesville



Prepared by the Chester County Planning Commission, 2017.  
This map was digitally compiled for internal use by the County of Chester, PA to provide an index to parcels and for other reference purposes. In regards to the information or data furnished herein, County of Chester, PA makes no representation of any kind, including but not limited to, the warranties of merchantability or fitness for a particular use, nor are any such warranties to be implied or inferred [www.chescoplanning.org](http://www.chescoplanning.org).

Sources: Chester County Planning Commission, 2017.



ratio = 1:237,600