
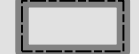






Map Features

-  County Boundary
-  Municipalities
-  "Unprotected" Open Space
-  Existing Woodlands
-  1777 Woodlands

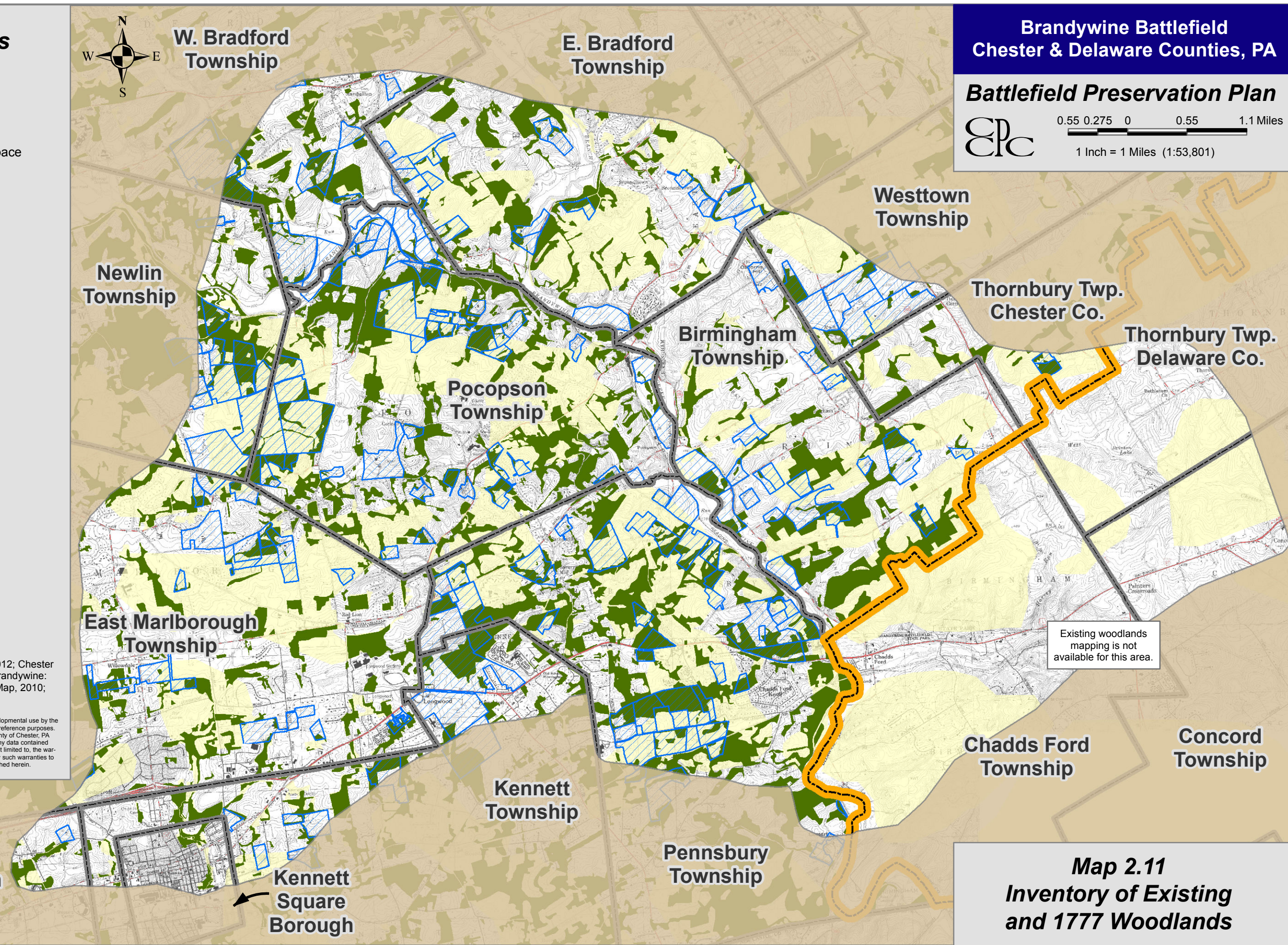


Brandywine Battlefield
Chester & Delaware Counties, PA

Battlefield Preservation Plan

 0.55 0.275 0 0.55 1.1 Miles

1 Inch = 1 Miles (1:53,801)



Sources:
Chester County Planning Commission, 2012; Chester County Parks and Recreation, Battle of Brandywine: Historic Resource Survey and Animated Map, 2010; USGS 1998 Quadrangles.

This map was digitally compiled for internal maintenance and developmental use by the County of Chester, PA to provide an index to parcels and for other reference purposes. Parcel lines do not represent actual field surveys of premises. County of Chester, PA makes no claims as to the completeness, accuracy or content of any data contained hereon, and makes no representation of any kind, including, but not limited to, the warranties of merchantability or fitness for a particular use, nor are any such warranties to be implied or inferred, with respect to the information or data furnished herein.

Map 2.11
Inventory of Existing
and 1777 Woodlands