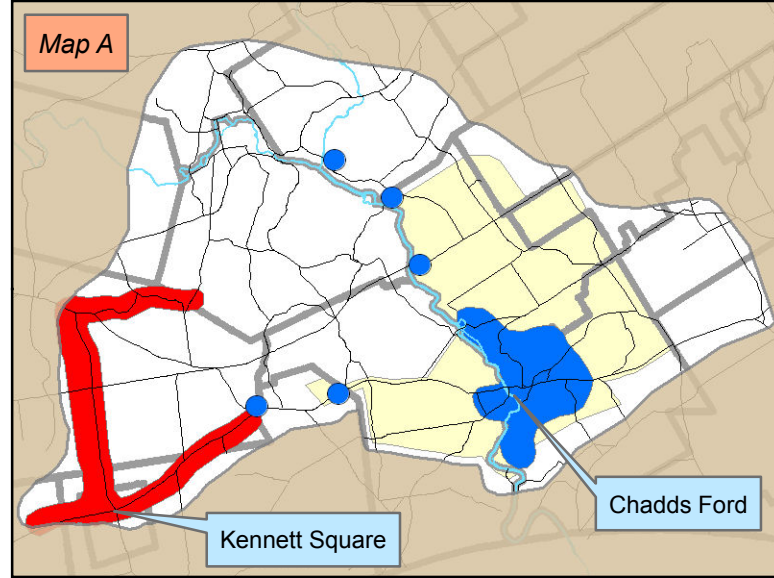


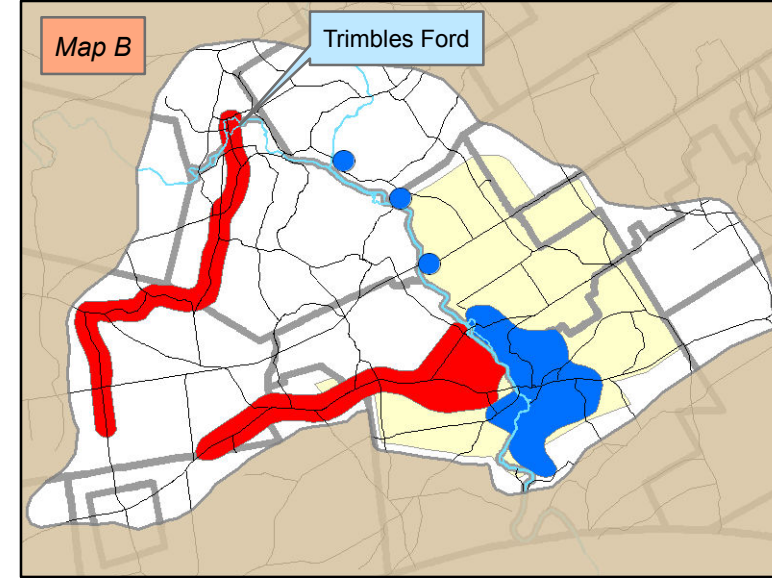
# Map Features

-  Roads in 1777
-  British Area of Control
-  American Area of Control
-  National Historic Landmark
-  Municipalities

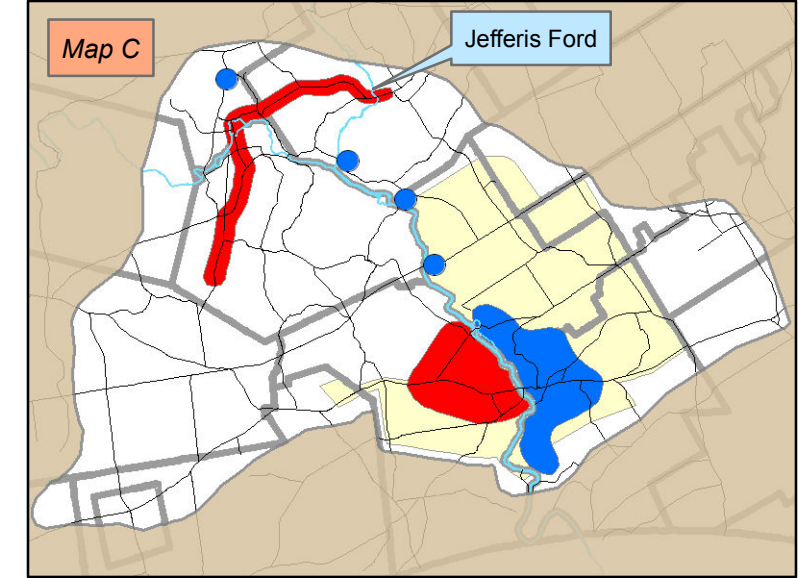
**5:00 to 6:45 AM (British Begin to March)**



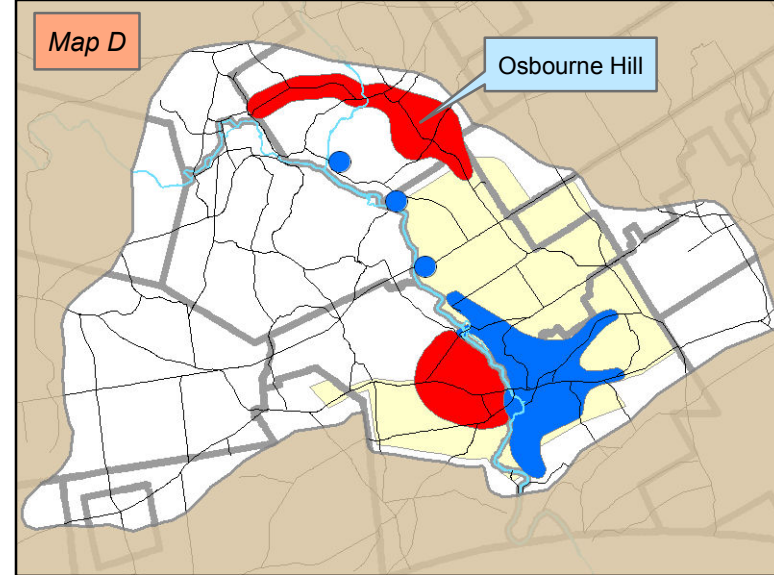
**7:00 to 9:15 AM (British Cross Trimbles Ford)**



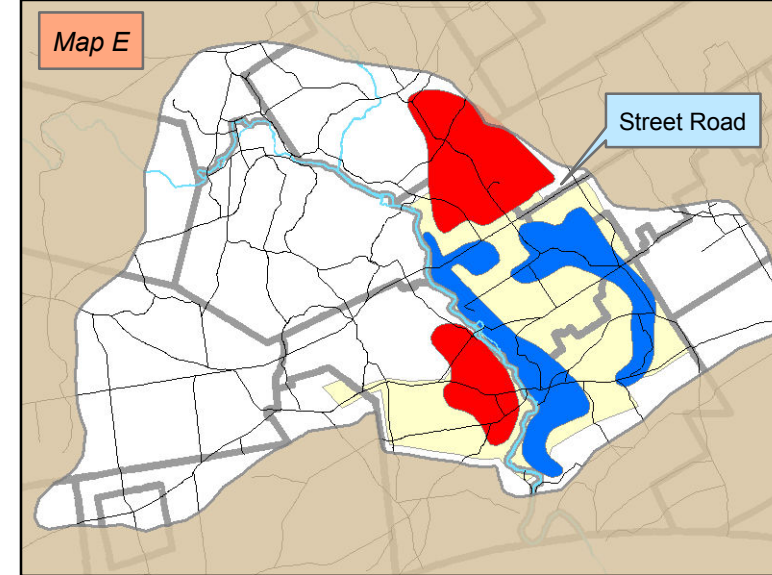
**9:30 to 11:45 AM (British Cross Jefferis Ford)**



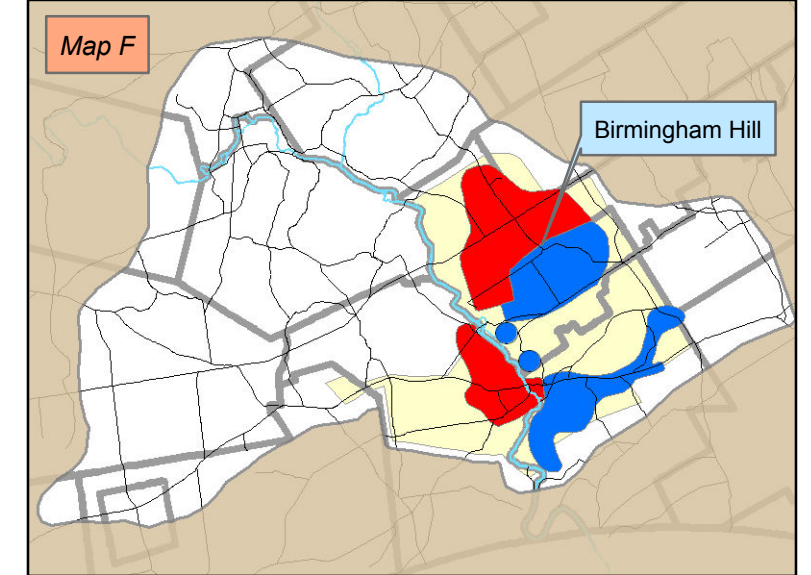
**Noon to 2:15 PM (British Form Lines)**



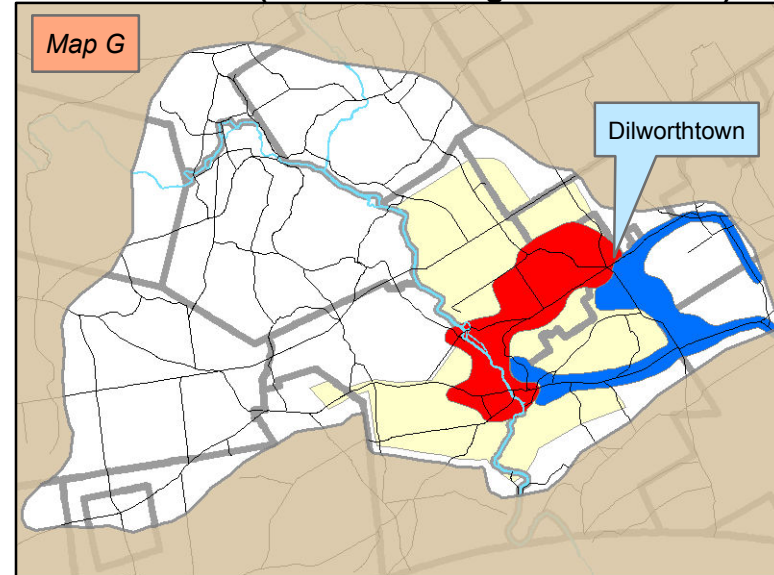
**2:30 to 4:45 PM (British Attack)**



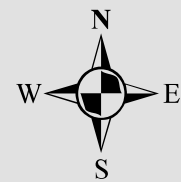
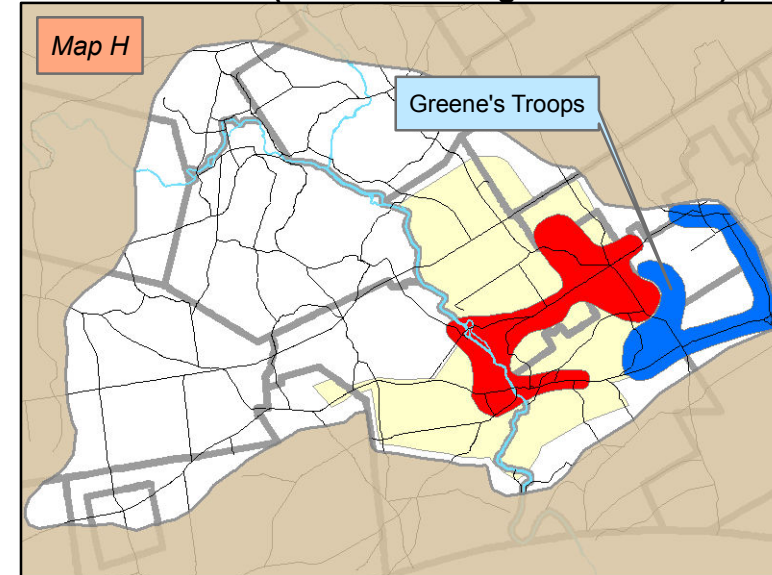
**5:00 to 5:45 (British Advance)**



**6:00 to 6:45 PM (American's Organized Retreat)**



**7:00 to 7:30 PM (Greene's Rearguard Defense)**



Source:  
Chester County Planning Commission, 2012; ABPP  
Survey 2010.

This map was digitally compiled for internal maintenance and developmental use by the County of Chester, PA to provide an index to parcels and for other reference purposes. Parcel lines do not represent actual field surveys of premises. County of Chester, PA makes no claims as to the completeness, accuracy or content of any data contained herein, and makes no representation of any kind, including, but not limited to, the warranties of merchantability or fitness for a particular use, nor are any such warranties to be implied or inferred, with respect to the information or data furnished herein.

**Brandywine Battlefield  
Chester & Delaware Counties, PA**

***Battlefield Preservation Plan***



1.5 0.75 0 1.5 3 Miles

1 Inch = 3 Miles (1:190,080)

**Map 1.11  
Battle of Brandywine: British  
and American Areas of Control**