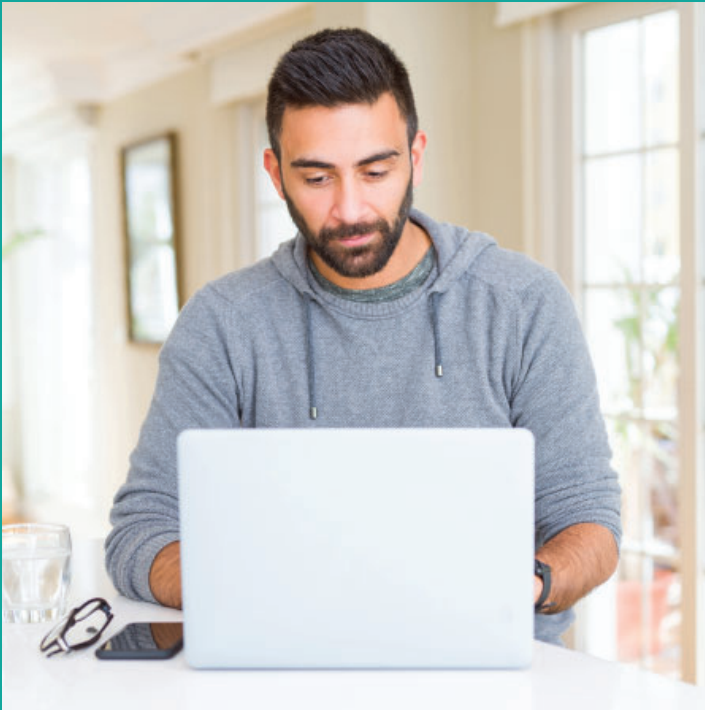


# How to Fill out the 2020 Census If Your Mail is Delivered to a P.O. Box



## ATTENTION: P.O. BOX USERS

- In March 2020, the Census Bureau began mailing letters instructing Chester County residents on how to fill out the 2020 Census. However, the Census Bureau can only send these letters to physical addresses where people actually live, not to P.O. Boxes.
- If you use a P.O. Box to receive your residential mail, you will **NOT** receive an instruction letter from the Census Bureau. But, you can still fill out the 2020 Census from now until October 31, 2020 by filling out a form online at **2020census.gov**. Or you can fill out the census over the phone by calling **844-330-2020**.



This flyer was distributed by the  
Chester County Commissioners' Census 2020 Complete Count Committee.

For more information, go to [www.chesco.org/planning/cccc](http://www.chesco.org/planning/cccc)  
or contact the Chester County Planning Commission at  
[chescocensus@chesco.org](mailto:chescocensus@chesco.org) or 610-344-6285.

United States®  
**Census  
2020**