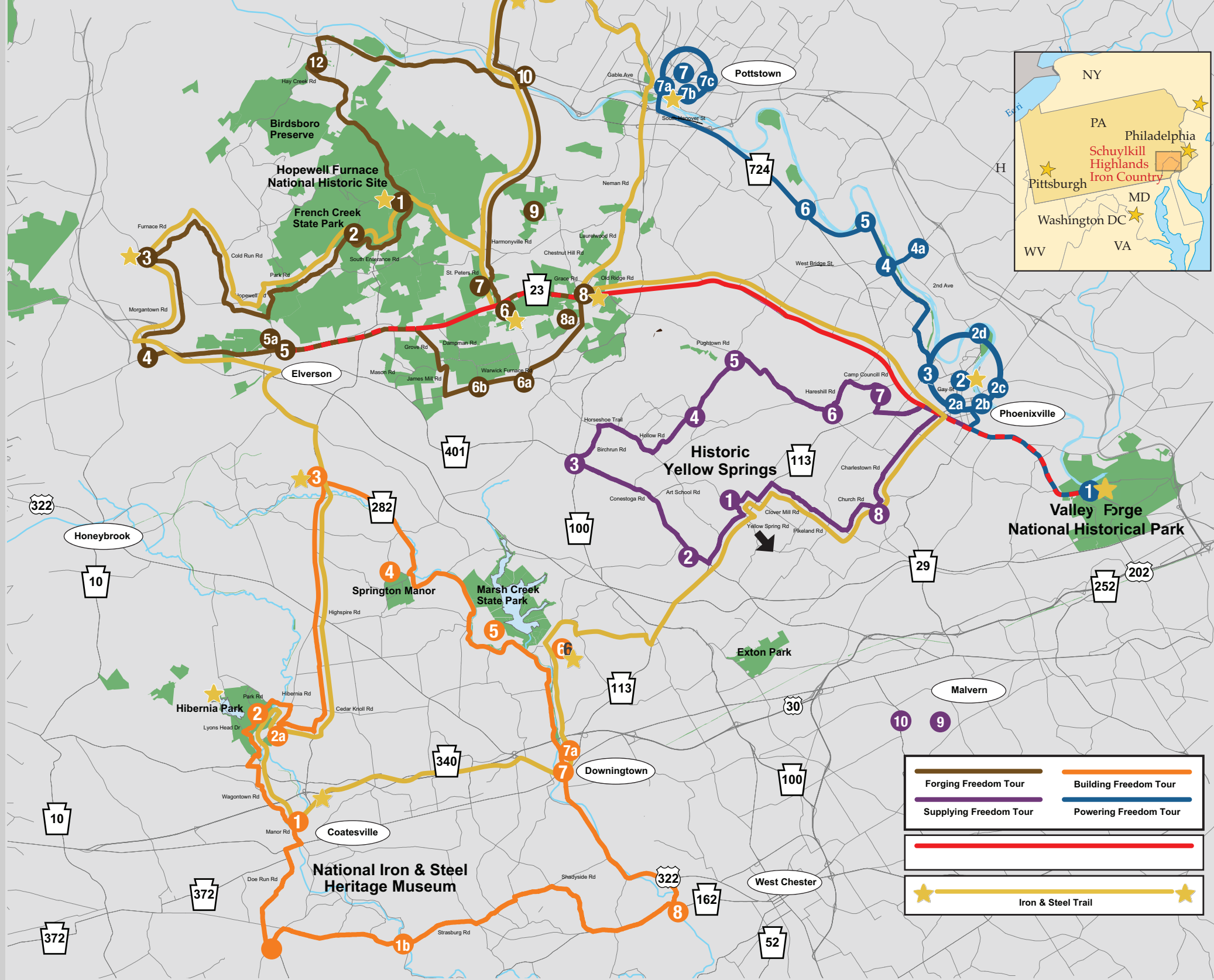


HIKING, BIKING, HISTORY & FUN



Forging Freedom Tour	Building Freedom Tour
Supplying Freedom Tour	Powering Freedom Tour
Iron & Steel Trail	



National Iron & Steel Heritage Museum
www.ironandsteelheritage.org

50 South 1st Avenue, Coatesville, PA 19320 | (610) 384-9282

IRON & STEEL TRAIL AND HERITAGE TOURS



Come Home to Iron & Steel Country

Explore the Iron & Steel Heritage and Recreation region located in and around the Schuylkill Highlands Conservation Landscape and Hopewell Big Woods, the finest natural preserve in our region. Etched into the natural landscape of portions of Pennsylvania's Chester, Berks, Montgomery and Lancaster Counties are the sites that celebrate the iron and steel industries which literally forged our nation. We invite you to enjoy waterways, woodlands, farms and fields; to explore historic towns and villages; and to discover the ironmaster mansions and 300 years of industrial sites which reflect the contrast between technology and rural living in this region.

Starting in the early 1700's, immigrants came seeking a better life. Using the area's natural resources, they helped build a nation during the American Revolution. In the 1800's, they were joined by other immigrants from around the world fighting to save the country during the Civil War, and then leading it into massive industrialization and on to become a world power. This region saw the struggle to end slavery and welcomed the nation's first female industrialists. Its stories and places boast a longer history with the iron and steel industry than any other region in the nation.

The new Schuylkill Highlands Iron and Steel Heritage Scenic Byway along Route 23 from Valley Forge National Historical Park to Elverson Borough is an all inclusive gateway. From National Parks to farms and vineyards, 18th and 19th century communities, to urban night life...morning, noon, and night we have it all!

★★★★★ Iron & Steel Trail ★★★★★

We invite you to explore the Iron & Steel Trail to experience the industrial past and present. You can also select a complimentary self-guided heritage tour blending history and recreation to discover the Iron & Steel landscape's many "Faces of Freedom."

For more information, we encourage you to visit our website at: ironandsteelheritage.org



Links to pages from livingplaces.com include text that has been adapted from copies of original nomination documents of sites appearing on the National Park Service's National Register of Historic Places. Living Places has been deemed reliable, but not guaranteed.

This project was funded in part by a grant from Community Conservation Partnerships Program, under the administration of the Pennsylvania Department of Conservation and Natural Resources, Bureau of Recreation in support of the Schuylkill Highlands Conservation Landscape.

Forging Freedom Tour

Both literally and figuratively the ironmasters of this region supported their emerging nation by forging freedom. Early ironmasters resented British laws that required them to ship pig iron to England and then buy back the finished product. When war came to North America in 1775, the iron industry forged freedom by supplying munitions to Washington's beleaguered army. The Forging Freedom Tour explores this theme beginning at Hopewell Furnace, which provided war materials for the American Revolution and the Civil War, and experienced every social and political event of the 19th century. It tours neighboring furnaces, critical to the war effort and growth of the new country

- ★ (1) **Hopewell Furnace National Historic Site**
🗺️ 🅓 🅒 🅑 🅕 🅖 🅗 🅘 🅙
2 Mark Bird Lane, Elverson
610-592-8773 • [nps.gov/hofu](https://www.nps.gov/hofu)
- (2) **French Creek State Park**
🅓 🅒 🅑 🅕 🅖 🅗 🅘 🅙 🅚 🅛 🅜 🅝
843 Park Road, Douglassville
610-582-9680 • dcnr.state.pa.us/stateparks
(search: French Creek)
- ★ (3) **Joanna Furnace** 🗺️ 🅓 🅒 🅑 🅕 🅖 🅗 🅘 🅙
1250 Furnace Road, Geigertown
610-286-0388 • haycreek.org
- (4) **Morgantown** 🗺️ 🅓
Heritage Stop at the intersection of Rts 23 and 10.
livingplaces.com (search: Morgantown)
- (5) **Elverson** 🗺️ 🅓 🅒 🅑 🅕 🅖 🅗 🅘 🅙
Heritage Stop at the intersections of Rts 23 and 82.
livingplaces.com (search: Elverson)
- (5a) **Crow's Nest Preserve** 🅓 🅒 🅑 🅕
201 Piersol Road, Elverson
610-286-7955 • natlands.org/Crows_Nest
- ★ (6) **Warwick County Park & Iron Tour**
🗺️ 🅓 🅒 🅑 🅕 🅖 🅗 🅘 🅙 🅚 🅛 🅜 🅝
382 County Park Road, Pottstown
610-469-1916 • chesco.org/ccparks
Horseshoe Trail at Warwick 🅓 🅒 🅑 🅕
Supplying & Powering Freedom Tours
232 Carriage Court, Wayne
484-432-2150 • hstrail.org

SUGGESTED START:	Hopewell Furnace National Historic Site Visitor's Center
ALLOW:	7 hours to tour; 2 days to explore
★ IRON & STEEL SITES:	Joanna Furnace, Warwick County Park, Coventryville, Hopewell Furnace National Historic Site, and Pine Forge
HERITAGE & RECREATION:	French Creek State Park, Coventry Woods Preserve, Welkinweir, Warwick County Park, Monocacy Hill Recreation Area, and Crow's Nest Preserve
HISTORIC VILLAGES TO SHOP & EAT:	Elverson, Douglassville, Coventryville, Birdsboro, and St. Peter's Village

- (6a) **Warwick Furnace Farms** 🅓 🅒 🅑 🅕 🅖
Valley and Warwick Furnace Road
610-933-7577 • frenchandpickering.org
- (6b) **Reading Furnace** 🅓
Mansion Road, Elverson
- (7) **St. Peter's Village** 🗺️ 🅓 🅒 🅑 🅕 🅖
Heritage Stop at St. Peter's Road off Route 23.
livingplaces.com (search: Saint Peter's)
- ★ (8) **Coventryville** 🅓
Heritage Stop at Route 23 and Coventryville Road
livingplaces.com (search: Coventryville)
- (8a) **Welkinweir** 🅓 🅒 🅑 🅕 🅖 🅗
368 Prizer Road, Pughtown
610-469-7543 • welkinweir.org
- (9) **Coventry Woods Preserve** 🅓 🅒 🅑 🅕 🅖 🅗
1954 St. Peter's Road, Pottstown
610-323-1694 • northcoventry.us
- (10) **Douglasville** 🗺️ 🅓 🅒 🅑 🅕 🅖 🅗
Morlatton Village
31 Old Philadelphia Pike, Douglasville
610-385-4762 • info@historicpreservationtrust.org
- ★ (11) **Pine Forge Historical Society** 🅓 🅒 🅑 🅕
Pine Forge Historic Site
Pine Forge Road, Pine Forge
610-367-7881 • rutterfoundation.org
- (12) **Birdsboro** 🗺️ 🅓
Heritage Stop at the intersection of Rts 345 and 724.
www.livingplaces.com (search: Birdsboro)

Supplying Freedom Tour

This area of Chester County supplied the fight for freedom with iron products, food, medicines, and textiles. Washington's army at Valley Forge would not have survived the winter of 1777-1778 without support from the surrounding countryside. Unfortunately, the area also supplied freedom with the sacrifice of soldiers and the looting of civilian property during the Philadelphia Campaign of 1777. The Supplying Freedom Tour begins at Historic Yellow Springs where Washington set up headquarters after the Battle of the Clouds and the first military hospital in the United States was built. It continues to explore this theme with visits to the Paoli Battlefield and three mills which provided gun powder, flour and cloth.

- (1) **Historic Yellow Springs**
🗺️ 🅓 🅒 🅑 🅕 🅖 🅗 🅘 🅙
1685 Art School Road, Chester Springs
610-827-7414 • yellowsprings.org
- (2) **Mill at Anselma**
🗺️ 🅓 🅒 🅑 🅕 🅖 🅗 🅘 🅙
1730 Conestoga Road, Chester Springs
610-827-1906 • anselmamill.org
- (3) **Ludwig's Corner** 🗺️ 🅓 🅒 🅑 🅕 🅖 🅗
Heritage Stop at the intersection of Rts 401 and 100.
livingplaces.com (search: West Vincent)
- (4) **Birchrunville** 🗺️ 🅓 🅒 🅑 🅕
Heritage Site at the intersection of Hollow and Flowing Springs roads.
livingplaces.com (search: Birchrunville)
- (5) **Sheeder-Hall Covered Bridge** 🅓
Heritage Site at the intersection of Sheeder and Birchrun roads, Chester Springs.
- (6) **Kimberton Village** 🗺️ 🅓 🅒 🅑 🅕
Heritage Stop at the intersection of Kimberton and Hareshill roads.
livingplaces.com (search: Kimberton)
- (7) **Continental Powder Works and Rapps Dam Covered Bridge**
🗺️ 🅓 🅒 🅑 🅕 🅖 🅗 🅘
Rapps Dam Road off Rts 23 and 113.
- (8) **The Woolen Mill of Charlestown** 🗺️ 🅓
Charlestown Road, Charlestown Village
- (9) **Historic Sugartown** 🗺️ 🅓 🅒 🅑 🅕 🅖 🅗
90 Sugartown Road, Malvern
610-640-2667 • historicsugartown.org
- (10) **Paoli Battlefield Historical Park**
🗺️ 🅓 🅒 🅑 🅕 🅖 🅗
Heritage Stop at the intersection of Monument and Wayne avenues, Malvern
484-320-7173 • pbpfc.org

Building Freedom Tour

At the end of the American Revolution, a new nation offered some, but not all, of its citizens unprecedented advantages both politically and economically. To build freedom, however, the citizens of Chester County fought to end slavery and accepted an unprecedented role for women. Rebecca Lukens took over her family's company in 1825 and saved it from bankruptcy to become Lukens Steel, the longest continuously operating firm in the American iron and steel industry. Beginning at the Lukens National Historic District, the Building Freedom Tour explores the evolution from the 18th and 19th century ironmasters to the steel masters of the 20th century.

- ★ (1) **Coatesville and the National Iron & Steel Heritage Museum**
🗺️ 🅓 🅒 🅑 🅕 🅖 🅗 🅘 🅙
50 South 1st Avenue, Coatesville
610-384-9282 • steelmuseum.org
- (1a) **Ercildoun Village** 🗺️ 🅓 🅒 🅑 🅕
Rebecca Lukens burial site at Erculdoun Church of Christ Cemetery
livingplaces.com (search: Ercildoun)
- (1b) **Mortonville/Laurel Iron Works** 🗺️ 🅓 🅒 🅑 🅕 🅖
Heritage Stop at the intersection of Strasburg and Mortonville roads.
livingplaces.com (search: Newlin)
- ★ (2) **Hibernia County Park/Chambers Lake**
🗺️ 🅓 🅒 🅑 🅕 🅖 🅗 🅘 🅙
Hibernia County Park, Wagontown
610-383-3812 • chesco.org/ccparks
Hibernia Mansion & Heritage Trail 🗺️ 🅓 🅒 🅑 🅕
See Hibernia County Park
- (2a) **Hibernia United Methodist Church** 🅓
220 Hibernia Road, Coatesville
bggm-umc.org/hibernia/history.htm
- ★ (3) **Wyebrook Farm Iron Tour** 🅓 🅒 🅑 🅕 🅖 🅗
150 Wyebrook Road, Honeybrook
610-942-7481 • wyebrookfarm.com
- (4) **Springton Manor Farm**
🗺️ 🅓 🅒 🅑 🅕 🅖 🅗
860 Springton Road, Glenmoore
610-942-2450
chesco.org/1746/Springton-Manor-Farm
- (5) **Marsh Creek State Park**
🅓 🅒 🅑 🅕 🅖 🅗 🅘 🅙
675 Park Road, Downingtown
dcnr.state.pa.us/stateparks
- ★ (6) **Dowlin (Mary Ann) Forge Park** 🗺️ 🅓 🅒 🅑 🅕
Shelmire Road, Downingtown
livingplaces.com (search: Dowlin)
- (7) **Downingtown Historic District** 🗺️ 🅓 🅒 🅑 🅕 🅖
Heritage Stop at the intersection of Lancaster and Brandywine avenues.
downingtown.org/History.html
- (7a) **Struble Trail** 🅓 🅒 🅑 🅕 🅖 🅗
Entrance and parking lot off of Rt 282 on Norwood in Downingtown.
chesco.org/ccparks
- (8) **Marshallton Village** 🗺️ 🅓 🅒 🅑 🅕
Heritage Stop at the intersection of Strasburg Road (162) and Sugars Bridge Road.
livingplaces.com (search: Marshallton Historic)

Powering Freedom Tour

Winning independence from Great Britain established the United States of America. Many European countries wanted the new country to fail. However, in the late 18th and 19th centuries industrial development in this region helped guarantee that the new country would thrive and remain independent. The Powering Freedom Tour follows part of the Schuylkill River Trail. The Schuylkill River Heritage Center, located in the historic Foundry Building, adjacent to a portion of the Schuylkill River Trail in Phoenixville, showcases the industrial legacy of Phoenixville and the Schuylkill River. Interactive exhibits and videos tell the story of the industries that grew up all along the river because of the transportation routes provided by the Schuylkill Canal, and later, the expansion of the railroads throughout the region.

- ★ (1) **Valley Forge National Historical Park**
🗺️ 🅓 🅒 🅑 🅕 🅖 🅗 🅘 🅙
1400 North Outer Line Drive, King of Prussia
610-783-1077 • [nps.gov/vafo](https://www.nps.gov/vafo)
- ★ (2) **Schuylkill River Heritage Center** 🗺️ 🅓 🅒 🅑 🅕 🅖 🅗
2 North Main Street, Phoenixville
610-935-2181 • phoenixvillefoundry.org
- (2a) **Phoenixville Historic District** 🗺️ 🅓 🅒 🅑 🅕
Heritage Stop located at the intersection of Bridge Street (113) and Main Street in Phoenixville Borough.
livingplaces.com (search: Phoenixville)
- (2b) **Historical Society Phoenixville Area** 🗺️ 🅓 🅒 🅑 🅕
204 Church Street, Phoenixville • hspa-pa.org
- (2c) **Lock 60** 🗺️ 🅓 🅒 🅑 🅕 🅖 🅗
Lock 60 on the Schuylkill Canal
400 Towpath Road, Mont Clare
610-917-0021 • schuylkillcanal.org
- (2d) **Black Rock Sanctuary** 🅓 🅒 🅑 🅕 🅖 🅗
953 Black Rock Road, on Rte 113 in Phoenixville
610-469-1916 • chesco.org/ccparks
livingplaces.com (search: Schuylkill Canal)
- (3) **Schuylkill River Trail** 🅓 🅒 🅑 🅕 🅖 🅗
Trailhead at Cromby and Spring City
schuylkillrivertrail.com
- (4) **Spring City Main Street** 🗺️ 🅓 🅒 🅑 🅕
Heritage Stop located at intersection of Bridge and Main streets in Spring City.
springcitypa.net/home
- (4a) **Spring-Ford Area Historical Society** 🗺️ 🅓 🅒 🅑 🅕
526 Main Street, Royersford
610-948-7127 • springcitypa.net/sfahs
- (5) **Fricks Lock Village Trailhead** 🗺️ 🅓 🅒 🅑 🅕
Fricks Lock Road, Pottstown
610-495-5443 • eastcoventry-pa.gov
- (6) **Tow Path Park** 🗺️ 🅓 🅒 🅑 🅕 🅖 🅗
1675 New Schuylkill Road, Pottstown
610-495-5443 • eastcoventry-pa.gov
- (7) **Historic Pottstown** 🗺️ 🅓 🅒 🅑 🅕
Heritage Stop at the intersection of Hanover and High streets.
livingplaces.com (search: Pottstown)
- ★ (7a) **Pottsgrove Manor** 🗺️ 🅓 🅒 🅑 🅕
100 West King Street, Pottstown
610-326-4014
historicsites.montcopa.org/historicsites
- (7b) **Riverfront Park Trailhead**
🗺️ 🅓 🅒 🅑 🅕 🅖 🅗
River of Revolutions Interpretive Center
Schuylkill River National Heritage Area and Trail College Drive, Pottstown
610-970-6500 • schuylkillriver.org
- ★ (7c) **Colebrookdale Railroad** 🗺️ 🅓 🅒 🅑 🅕
610-367-0200 • colebrookdalerailroad.com

SUGGESTED START:	Historic Yellow Springs
ALLOW:	4 hours to tour; 1 day to explore
HERITAGE & RECREATION:	The Woolen Mill of Charlestown, Mill at Anselma, Continental Powder Works and Rapps Dam Covered Bridge, Historic Sugartown, Historic Yellow Springs, Birchrunville, Sheeder-Hall Covered Bridge, and French Creek Trail
HISTORIC VILLAGES TO SHOP & EAT:	Ludwigs Corner, Kimberton Village and Paoli Battlefield Historic Park

SUGGESTED START:	National Iron & Steel Heritage Museum and Lukens National Historic District
ALLOW:	3 hours to tour; ½-1 day to explore
★ IRON & STEEL SITES:	National Iron & Steel Heritage Museum, Hibernia Mansion, Isabella Furnace, Dowlin Forge Park, and Wyebrook Farm Iron Tour
HERITAGE & RECREATION:	Struble Trail, Hibernia County Park, Springton Manor Farm, and Marsh Creek State Park
HISTORIC VILLAGES TO SHOP & EAT:	Ercildoun Village, Downingtown Historic District and Marshallton Village

SUGGESTED START:	Visitor Center and Washington's Headquarters at Valley Forge National Historical Park
ALLOW:	4 hours to tour; 1 day to explore
★ IRON & STEEL SITES:	Schuylkill River Heritage Center at Phoenixville, Pottsgrove Manor and Colebrookdale Railroad
HERITAGE & RECREATION:	Valley Forge National Historical Park, Black Rock Sanctuary, Lock 60, Fricks Lock Village Trailhead, Schuylkill River Trail, Riverfront Park Trailhead, Spring-Ford Area Historical Society, and Tow Path Park
HISTORIC VILLAGES TO SHOP & EAT:	Phoenixville Historic District, Royersford, Spring City, and Historic Pottstown

SYMBOL KEY

- 🗺️ Interpretive Center & Visitor Services
- 🅓 Parking
- 🅒 Restrooms
- 🅑 Food
- 🅕 Interpretive Signage/Trail
- 🅖 Hiking
- 🅗 Biking
- 🅘 Equestrian
- 🅙 Picnicking
- 🅚 Fishing
- 🅛 Paddling
- 🅜 Playground
- 🅝 Historic Site