

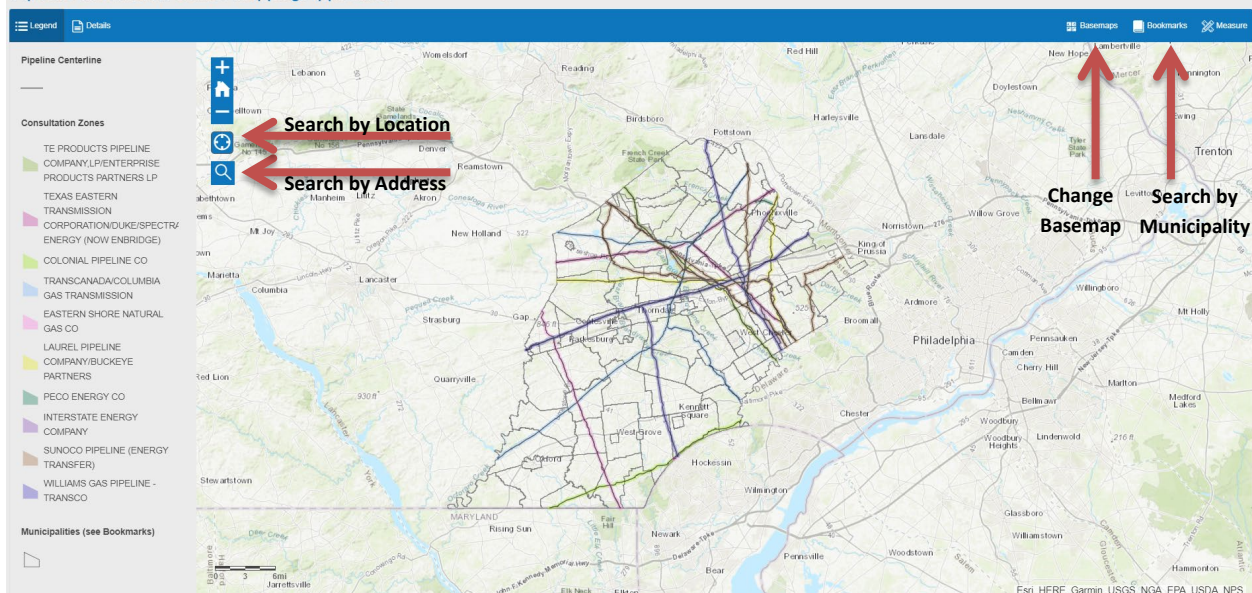
# How to use the Pipeline Information Center Interactive Map

The Pipeline Information Center (PIC) Interactive Map allows users to view pipeline corridors on a county-wide map and provides information on how to contact pipeline companies with non-emergency questions. Each pipeline corridor is represented by a swath of color, known as a Consultation Zone. The Chester County Planning Commission map utilizes a Consultation Zone of 1,000 feet on either side of the pipeline, as recommended by the Pipelines and Informed Planning Alliance, sponsored by the US DOT.

When a property developer/owner is planning new property development activity within the Consultation Zone, contact with the transmission pipeline operator is recommended. The source of the mapping is the National Pipeline Mapping System (NPMS) and the pipeline locations are approximate. According to NPMS, the data should be considered no more accurate than +/- 500 feet. PA 811 should always be called before any digging activity.

## Searching for Information

Pipeline Information Center Mapping Application



There are three main ways to search on our map: Search Tool, Current Location and by municipality.

**Search Tool:** Click on the magnifying glass and enter an address, municipality, or a place of interest into the search box.

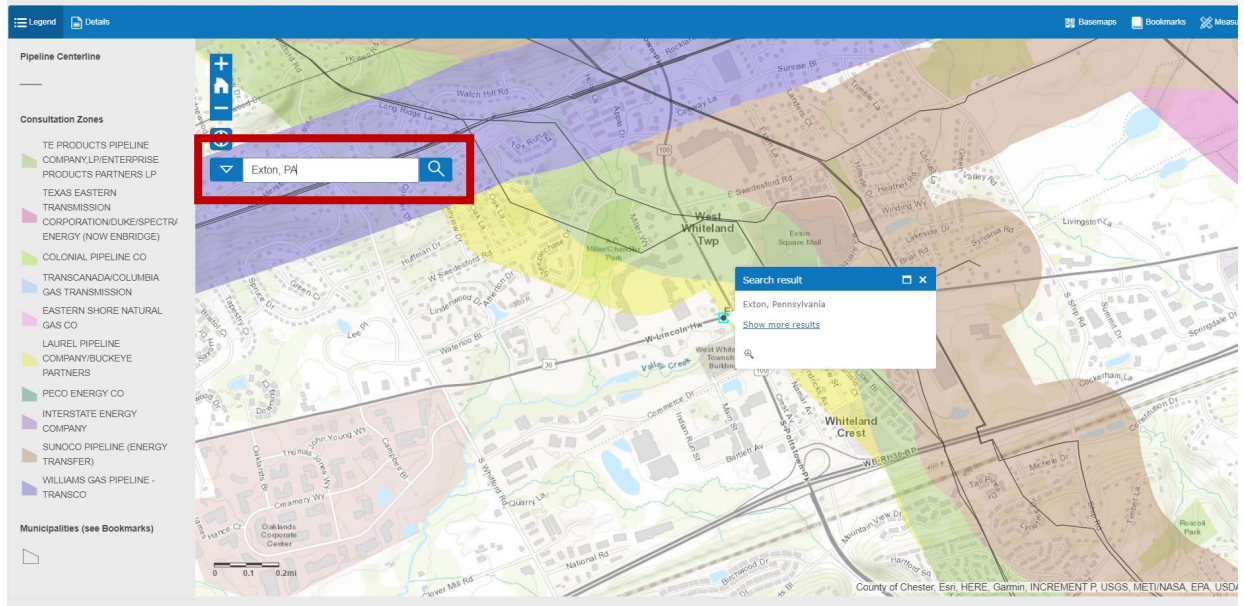
**Current Location:** Click on the compass icon above the magnifying glass. The GPS in your phone, tablet, or computer is used to find your current location on the map.

**Municipality:** Select “Bookmarks” at the top right. When you click here, a drop down menu of Chester County’s municipalities will appear. The map will zoom to the extent of the municipality selected.

The search results in our example show Exton, PA.

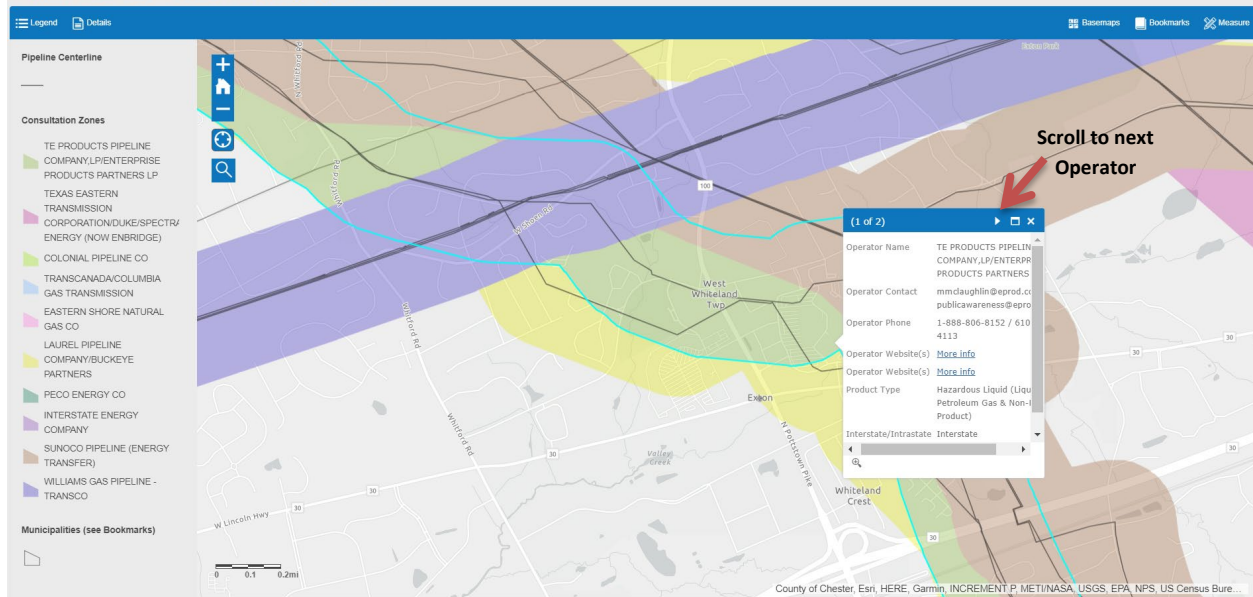
**Base Maps:** You can also select from a variety of base maps to view your search results by clicking the dropdown at the top right side of the map. These base maps include aerial imagery, street maps and topographic maps, to name a few.

## Pipeline Information Center Mapping Application



In this example, there are four pipelines that run through the Exton area. You can click on each pipeline to view the Operator's information, including a contact name, phone number (if available), websites, product type, and whether that pipeline is interstate or intrastate. If there is more than one pipeline in the area you click on, the pop-up box will show "(1 of #)" in the blue bar at the top and an arrow on the right side of the bar. If you click on that arrow, it will take you to the next operator's information in the overlapping area. The specific pipeline corridor you are viewing will be outlined in blue.

## Pipeline Information Center Mapping Application



If you have any questions, comments, or concerns about a pipeline, you can contact the operator with the given information.

If you have any questions about this map or the PIC, please contact us.

Carol J. Stauffer, AICP and Carrie J. Conwell, AICP  
601 Westtown Road, Suite 270  
P.O. Box 2747  
West Chester, PA 19380-0990

Phone: 610-344-6285  
Email: [ccpipelines@chesco.org](mailto:ccpipelines@chesco.org)