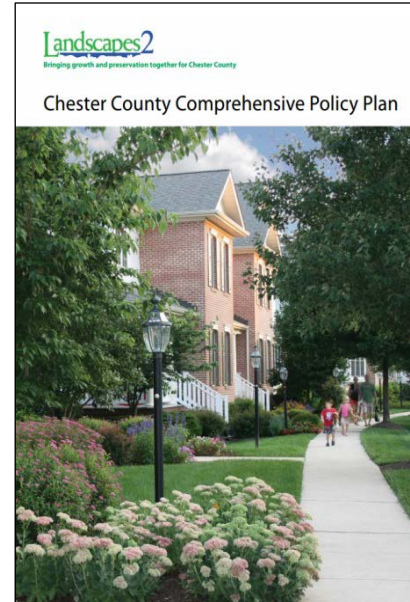
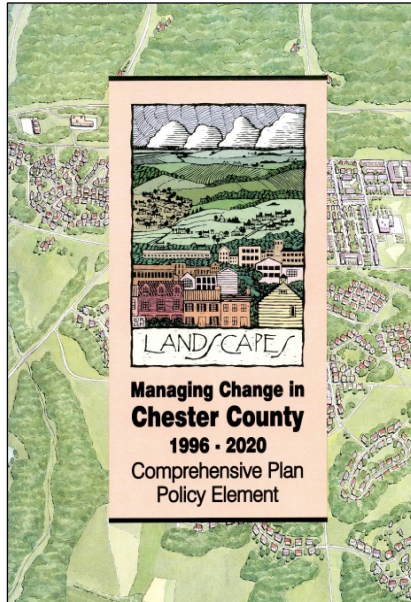




Chester County Comprehensive Plan Update



Landscapes and Landscapes2 Accomplishments 1996—2016



Sprawl has been limited



- Municipalities have been instrumental in limiting sprawl.
- The county's Vision Partnership Program has supported local municipalities.
- 10,000 fewer acres of land have been developed than expected.
- 40,000 more people than forecasted moved into the county.

Downtown urban centers have reenergized



- Many downtowns have revitalized with new food, entertainment, and shopping choices.
- The county's urban communities have added over 10,000 residents.
- The county's Community Revitalization Program has been a key factor in improving infrastructure.

Valuable open space has been protected



- 92,000 additional acres of open space have been preserved.
- Protected open space has increased from 8% of the county to nearly 27%.
- The county's open space preservation program has been a crucial part of this preservation effort.

Trails have become a key part of resident's lives



- Over half a million trips are taken on the county's trails every year.
- More than 25 miles of new multi-use trails have been built.
- The county has taken the lead on building the Schuylkill River Trail and the Chester Valley Trail.

The transportation system has worked well



- New road capacity has been added by major projects like the Route 202 widening, Exton Bypass connection, Route 29 Turnpike Interchange, and the Route 100 widening.
- The Paoli-Thorndale SEPTA line has experienced significant increased use.
- Over \$1.267 billion of state and federal money has been allocated to Chester County over the past 20 years.

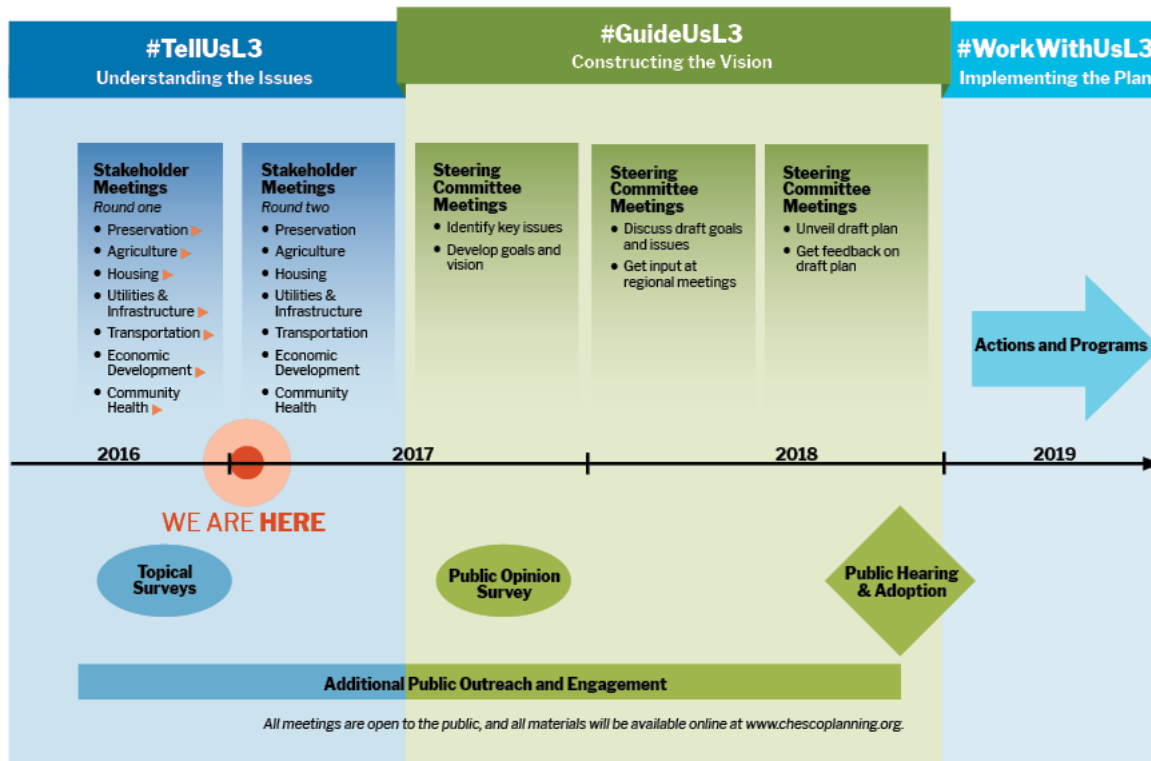
Landscapes and Landscapes2 have been very successful



What's Next?

With nearly 150,000 more people expected by 2045, the county needs to build on this success with Landscapes3.

Landscapes3 Public Process





Find out more at:

www.chescoplanning.org